

Catenin- α 1 (Phospho-Ser641) Ab

Cat.#: AF8082	Concn.: 1mg/ml	Mol.Wt.: 100 kd
Size: 50ul,100ul,200ul	Source: Rabbit	Clonality: Polyclonal

Application: WB 1:1000-3000, IHC 1:50-1:200

Reactivity: Human,Mouse,Rat

Purification: The Ab is from purified rabbit serum by affinity purification via sequential chromatography on phospho- and non-phospho-peptide affinity columns.

Specificity: Catenin- α 1 (Phospho-Ser641) Ab detects endogenous levels of Catenin- α 1 only when phosphorylated at Ser641

Immunogen: A synthesized peptide derived from human Catenin- α 1 (Phospho-Ser641)

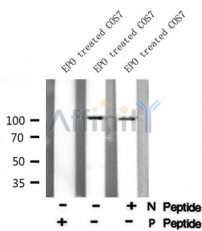
Uniprot: P35221

Subcellular Location: Cell membrane and Cytoplasm > cytoskeleton. Cell junction > adherens junction. Cell membrane. Cell junction. Found at cell-cell boundaries and probably at cell-matrix boundaries.

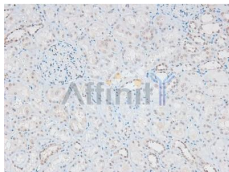
Tissue Specificity: Expressed ubiquitously in normal tissues.

Similarity: Belongs to the vinculin/alpha-catenin family.

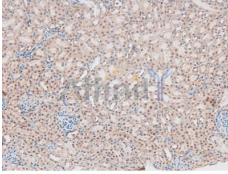
Storage Condition and Buffer: Rabbit IgG in phosphate buffered saline , pH 7.4, 150mM NaCl, 0.02% sodium azide and 50% glycerol.Store at -20 °C.Stable for 12 months from date of receipt



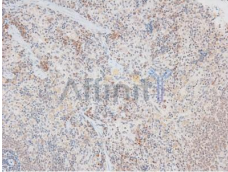
Western blot analysis Catenin- α 1 (Phospho-Ser641) using EPO treated COS7 whole cell lysates



AF8082 at 1/200 staining Human kidney tissue sections by IHC-P. The tissue was formaldehyde fixed and a heat mediated antigen retrieval step in citrate buffer was performed. The tissue was then blocked and incubated with the Ab for 1.5 hours at 22°C. An HRP conjugated goat anti-rabbit Ab was used as the secondary.



AF8082 at 1/200 staining Mouse kidney tissue sections by IHC-P. The tissue was formaldehyde fixed and a heat mediated antigen retrieval step in citrate buffer was performed. The tissue was then blocked and incubated with the Ab for 1.5 hours at 22°C. An HRP conjugated goat anti-rabbit Ab was used as the secondary.



AF8082 at 1/200 staining Rat spleen tissue sections by IHC-P. The tissue was formaldehyde fixed and a heat mediated antigen retrieval step in citrate buffer was performed. The tissue was then blocked and incubated with the Ab for 1.5 hours at 22°C. An HRP conjugated goat anti-rabbit Ab was used as the secondary.

IMPORTANT: For western blot, incubate membrane with diluted Ab in 5% w/v milk , 1X TBS, 0.1% Tween@20 at 4°C with gentle shaking, overnight.

For Research Use Only. Not for use in diagnostic and therapeutic procedures. Not for resale without express authorization.