

ATF-4 (Phospho-Ser219) Ab

Cat.#: AF8097	Concn.: 1mg/ml	Mol.Wt.: 40 kDa
Size: 50ul,100ul,200ul	Source: Rabbit	Clonality: Polyclonal

Application: WB 1:1000-3000

Reactivity: Human,Mouse,Rat

Purification: The Ab is from purified rabbit serum by affinity purification via sequential chromatography on phospho- and non-phospho-peptide affinity columns.

Specificity: ATF-4 (Phospho-Ser219) Ab detects endogenous levels of ATF-4 only when phosphorylated at Ser219

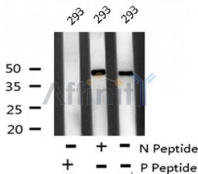
Immunogen: A synthesized peptide derived from human ATF-4 (Phospho-Ser219)

Uniprot: P18848

Subcellular Location: Cytoplasm. Cell membrane. Nucleus. Colocalizes with GABBR1 in hippocampal neuron dendritic membranes.

Similarity: The BetaTrCP degron motif promotes binding to BTRC when phosphorylated.Belongs to the bZIP family.

Storage Condition and Buffer: Rabbit IgG in phosphate buffered saline , pH 7.4, 150mM NaCl, 0.02% sodium azide and 50% glycerol.Store at -20 °C.Stable for 12 months from date of receipt



Western blot analysis ATF-4 (Phospho-Ser219) using 293 whole cell lysates

IMPORTANT: For western blot, incubate membrane with diluted Ab in 5% w/v milk , 1X TBS, 0.1% Tween@20 at 4°C with gentle shaking, overnight.

For Research Use Only. Not for use in diagnostic and therapeutic procedures. Not for resale without express authorization.