

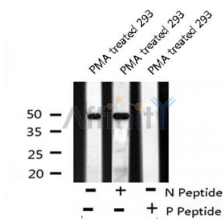
ATF-4 (Phospho-Ser224) Ab

Cat.#: AF8098
Size: 50ul,100ul,200ul

Concn.: 1mg/ml
Source: Rabbit

Mol.Wt.: 40 kDa
Clonality: Polyclonal

Application:	WB 1:1000-3000
Reactivity:	Human,Mouse,Rat
Purification:	The Ab is from purified rabbit serum by affinity purification via sequential chromatography on phospho- and non-phospho-peptide affinity columns.
Specificity:	ATF-4 (Phospho-Ser224) Ab detects endogenous levels of ATF-4 only when phosphorylated at Ser224
Immunogen:	A synthesized peptide derived from human ATF-4 (Phospho-Ser224)
Uniprot:	P18848
Subcellular Location:	Cytoplasm. Cell membrane. Nucleus. Colocalizes with GABBR1 in hippocampal neuron dendritic membranes.
Similarity:	The BetaTrCP degron motif promotes binding to BTRC when phosphorylated.Belongs to the bZIP family.
Storage Condition and Buffer:	Rabbit IgG in phosphate buffered saline , pH 7.4, 150mM NaCl, 0.02% sodium azide and 50% glycerol.Store at -20 °C.Stable for 12 months from date of receipt



Western blot analysis ATF-4 (Phospho-Ser224) using PMA treated 293 whole cell lysates

IMPORTANT: For western blot, incubate membrane with diluted Ab in 5% w/v milk , 1X TBS, 0.1% Tween@20 at 4°C with gentle shaking, overnight.

For Research Use Only. Not for use in diagnostic and therapeutic procedures. Not for resale without express authorization.