

eNOS (Phospho-Ser114) Ab

Cat.#: AF8111	Concn.: 1mg/ml	Mol.Wt.: 140kDa
Size: 50ul,100ul,200ul	Source: Rabbit	Clonality: Polyclonal

Application: WB 1:1000-3000, IF/ICC 1:100-1:500

Reactivity: Human

Purification: The Ab is from purified rabbit serum by affinity purification via sequential chromatography on phospho- and non-phospho-peptide affinity columns.

Specificity: eNOS (Phospho-Ser114) Ab detects endogenous levels of eNOS only when phosphorylated at Ser114

Immunogen: A synthesized peptide derived from human eNOS (Phospho-Ser114)

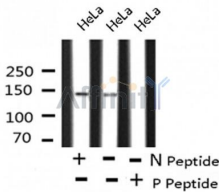
Uniprot: P29474

Subcellular Location: Cell membrane. Membrane, caveola. Cytoplasm, cytoskeleton. Golgi apparatus. Specifically associates with actin cytoskeleton in the G2 phase of the cell cycle and which is favored by interaction with NOSIP and results in a reduced enzymatic activity.

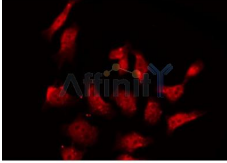
Tissue Specificity: Platelets, placenta, liver and kidney.

Similarity: Belongs to the NOS family.

Storage Condition and Buffer: Rabbit IgG in phosphate buffered saline , pH 7.4, 150mM NaCl, 0.02% sodium azide and 50% glycerol.Store at -20 °C.Stable for 12 months from date of receipt



Western blot analysis eNOS (Phospho-Ser114) using HeLa whole cell lysates



AF8111 staining K562 by IF/ICC. The sample were fixed with PFA and permeabilized in 0.1% Triton X-100, then blocked in 10% serum for 45 minutes at 25°C. The primary Ab was diluted at 1/200 and incubated with the sample for 1 hour at 37°C. An Alexa Fluor 594 conjugated goat anti-rabbit IgG (H+L) Ab, diluted at 1/600, was used as the secondary Ab.

IMPORTANT: For western blot, incubate membrane with diluted Ab in 5% w/v milk , 1X TBS, 0.1% Tween@20 at 4°C with gentle shaking, overnight.

For Research Use Only. Not for use in diagnostic and therapeutic procedures. Not for resale without express authorization.