

## ABL1/2 (Phospho-Tyr89/Tyr70) Ab

Cat.#: AF8131	Concn.: 1mg/ml	Mol.Wt.: 135kDa
Size: 50ul,100ul,200ul	Source: Rabbit	Clonality: Polyclonal

**Application:** WB 1:1000-3000, IF/ICC 1:100-1:500

**Reactivity:** Human,Mouse,Rat,Monkey

**Purification:** The Ab is from purified rabbit serum by affinity purification via sequential chromatography on phospho- and non-phospho-peptide affinity columns.

**Specificity:** ABL1/2 (Phospho-Tyr89/Tyr70) Ab detects endogenous levels of ABL1/2 only when phosphorylated at Tyr89/Tyr70

**Immunogen:** A synthesized peptide derived from human ABL1/2 (Phospho-Tyr89/Tyr70)

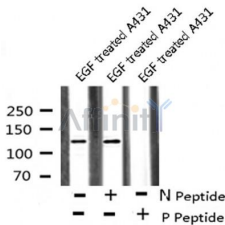
**Uniprot:** P00519/P42684

**Subcellular Location:** Cytoplasm > cytoskeleton. Nucleus. Sequestered into the cytoplasm through interaction with 14-3-3 proteins and Nucleus membrane. The myristoylated c-ABL protein is reported to be nuclear.

**Tissue Specificity:** Widely expressed.

**Similarity:** Belongs to the protein kinase superfamily. Tyr protein kinase family. ABL subfamily.

**Storage Condition and Buffer:** Rabbit IgG in phosphate buffered saline , pH 7.4, 150mM NaCl, 0.02% sodium azide and 50% glycerol.Store at -20 °C.Stable for 12 months from date of receipt



Western blot analysis ABL1/2 (Phospho-Tyr89/Tyr70) using EGF treated A431 whole cell lysates



AF8131 staining COS7 by IF/ICC. The sample were fixed with PFA and permeabilized in 0.1% Triton X-100, then blocked in 10% serum for 45 minutes at 25°C. The primary Ab was diluted at 1/200 and incubated with the sample for 1 hour at 37°C. An Alexa Fluor 594 conjugated goat anti-rabbit IgG (H+L) Ab, diluted at 1/600, was used as the secondary Ab.

**IMPORTANT:** For western blot, incubate membrane with diluted Ab in 5% w/v milk , 1X TBS, 0.1% Tween@20 at 4°C with gentle shaking, overnight.

For Research Use Only. Not for use in diagnostic and therapeutic procedures. Not for resale without express authorization.