

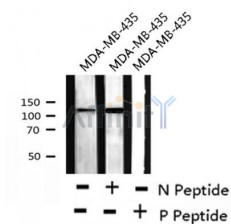
VE-Cadherin (Phospho-Tyr658) Ab

Cat.#: AF8206
Size: 50ul,100ul,200ul

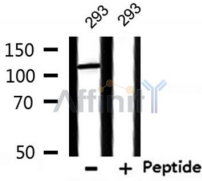
Concn.: 1mg/ml
Source: Rabbit

Mol.Wt.: 130kDa
Clonality: Polyclonal

Application:	WB 1:1000-3000
Reactivity:	Human,Mouse
Purification:	The Ab is from purified rabbit serum by affinity purification via sequential chromatography on phospho- and non-phospho-peptide affinity columns.
Specificity:	VE-Cadherin (Phospho-Tyr658) Ab detects endogenous levels of VE-Cadherin only when phosphorylated at Tyr658
Immunogen:	A synthesized peptide derived from human VE-Cadherin (Phospho-Tyr658)
Uniprot:	P33151
Subcellular Location:	Cell junction. Cell membrane. Found at cell-cell boundaries and probably at cell-matrix boundaries.
Tissue Specificity:	Endothelial tissues and brain.
Similarity:	Three calcium ions are usually bound at the interface of each cadherin domain and rigidify the connections, imparting a strong curvature to the full-length ectodomain.
Storage Condition and Buffer:	Rabbit IgG in phosphate buffered saline , pH 7.4, 150mM NaCl, 0.02% sodium azide and 50% glycerol.Store at -20 °C.Stable for 12 months from date of receipt



Western blot analysis VE-Cadherin (Phospho-Tyr658) using MDA-MB-435 whole cell lysates



Western blot analysis of extracts from 293, using VE-Cadherin (Phospho-Tyr658) Ab.

IMPORTANT: For western blot, incubate membrane with diluted Ab in 5% w/v milk , 1X TBS, 0.1% Tween@20 at 4°C with gentle shaking, overnight.

For Research Use Only. Not for use in diagnostic and therapeutic procedures. Not for resale without express authorization.