

BCL-10 (Phospho-Ser138) Ab

Cat.#: AF8215	Concn.: 1mg/ml	Mol.Wt.: 36 KD
Size: 50ul,100ul,200ul	Source: Rabbit	Clonality: Polyclonal

Application: WB 1:1000-3000

Reactivity: Human,Rat

Purification: The Ab is from purified rabbit serum by affinity purification via sequential chromatography on phospho- and non-phospho-peptide affinity columns.

Specificity: BCL-10 (Phospho-Ser138) Ab detects endogenous levels of BCL-10 only when phosphorylated at Ser138

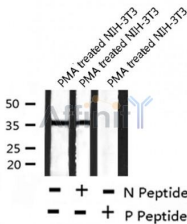
Immunogen: A synthesized peptide derived from human BCL-10 (Phospho-Ser138)

Uniprot: O95999

Subcellular Location: Cytoplasm > perinuclear region. Membrane raft. Appears to have a perinuclear, compact and filamentous pattern of expression. Also found in the nucleus of several types of tumor cells. Colocalized with DPP4 in membrane rafts.

Tissue Specificity: Ubiquitous.

Storage Condition and Buffer: Rabbit IgG in phosphate buffered saline , pH 7.4, 150mM NaCl, 0.02% sodium azide and 50% glycerol.Store at -20 °C.Stable for 12 months from date of receipt



Western blot analysis BCL-10 (Phospho-Ser138) using PMA treated NIH-3T3 whole cell lysates

IMPORTANT: For western blot, incubate membrane with diluted Ab in 5% w/v milk , 1X TBS, 0.1% Tween@20 at 4°C with gentle shaking, overnight.

For Research Use Only. Not for use in diagnostic and therapeutic procedures. Not for resale without express authorization.