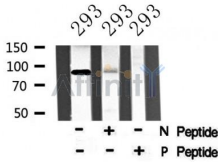


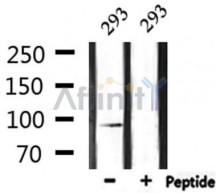
Leptin Receptor (Phospho-Tyr986) Ab

Cat.#: AF8219	Concn.: 1mg/ml	Mol.Wt.: 96kDa
Size: 50ul,100ul,200ul	Source: Rabbit	Clonality: Polyclonal

Application:	WB 1:1000-3000
Reactivity:	Human
Purification:	The Ab is from purified rabbit serum by affinity purification via sequential chromatography on phospho- and non-phospho-peptide affinity columns.
Specificity:	Leptin Receptor (Phospho-Tyr986) Ab detects endogenous levels of Leptin Receptor only when phosphorylated at Tyr986
Immunogen:	A synthesized peptide derived from human Leptin Receptor (Phospho-Tyr986)
Uniprot:	P48357
Subcellular Location:	Secreted and Cell membrane.
Tissue Specificity:	Isoform A is expressed in fetal liver and in hematopoietic tissues and choroid plexus. In adults highest expression in heart, liver, small intestine, prostate and ovary. Low level in lung and kidney. Isoform B is highly expressed in hypothalamus, but also in skeletal muscle. Detected in fundic and antral epithelial cells of the gastric mucosa (PubMed:19159218). Isoform B and isoform A are expressed by NK cells (at protein level) (PubMed:12504075).
Similarity:	The cytoplasmic domain may be essential for intracellular signal transduction by activation of JAK tyrosine kinase and STATs.The WSXWS motif appears to be necessary for proper protein folding and thereby efficient intracellular transport and cell-surface receptor binding.The box 1 motif is required for JAK interaction and/or activation.Belongs to the type I cytokine receptor family. Type 2 subfamily.
Storage Condition and Buffer:	Rabbit IgG in phosphate buffered saline , pH 7.4, 150mM NaCl, 0.02% sodium azide and 50% glycerol.Store at -20 °C.Stable for 12 months from date of receipt



Western blot analysis Leptin Receptor (Phospho-Tyr986) using 293 whole cell lysates



Western blot analysis of extracts from 293, using Leptin Receptor (Phospho-Tyr986) Ab.

IMPORTANT: For western blot, incubate membrane with diluted Ab in 5% w/v milk , 1X TBS, 0.1% Tween@20 at 4°C with gentle shaking, overnight.

For Research Use Only. Not for use in diagnostic and therapeutic procedures. Not for resale without express authorization.