

Caldesmon (Phospho-Ser759) Ab

Cat.#: AF8250	Concn.: 1mg/ml	Mol.Wt.: 80kDa
Size: 50ul,100ul,200ul	Source: Rabbit	Clonality: Polyclonal

Application: WB 1:1000-3000, IF/ICC 1:100-1:500

Reactivity: Mouse,Rat,Human

Purification: The Ab is from purified rabbit serum by affinity purification via sequential chromatography on phospho- and non-phospho-peptide affinity columns.

Specificity: Caldesmon (Phospho-Ser759) Ab detects endogenous levels of Caldesmon only when phosphorylated at Ser759

Immunogen: A synthesized peptide derived from human Caldesmon (Phospho-Ser759)

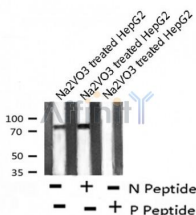
Uniprot: Q05682

Subcellular Location: Cytoplasm > cytoskeleton. Cytoplasm > myofibril. On thin filaments in smooth muscle and on stress fibers in fibroblasts (nonmuscle).

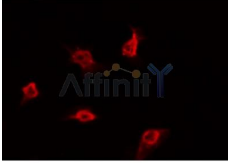
Tissue Specificity: High-molecular-weight caldesmon (isoform 1) is predominantly expressed in smooth muscles, whereas low-molecular-weight caldesmon (isoforms 2, 3, 4 and 5) are widely distributed in non-muscle tissues and cells. Not expressed in skeletal muscle or heart.

Similarity: The N-terminal part seems to be a myosin/calmodulin-binding domain, and the C-terminal a tropomyosin/actin/calmodulin-binding domain. These two domains are separated by a central helical region in the smooth-muscle form.Belongs to the caldesmon family.

Storage Condition and Buffer: Rabbit IgG in phosphate buffered saline , pH 7.4, 150mM NaCl, 0.02% sodium azide and 50% glycerol.Store at -20 °C.Stable for 12 months from date of receipt



Western blot analysis Caldesmon (Phospho-Ser759) using Na2VO3 treated HepG2 whole cell lysates



AF8250 staining HeLa cells by IF/ICC. The sample were fixed with PFA and permeabilized in 0.1% Triton X-100, then blocked in 10% serum for 45 minutes at 25°C. The primary Ab was diluted at 1/200 and incubated with the sample for 1 hour at 37°C. An Alexa Fluor 594 conjugated goat anti-rabbit IgG (H+L) Ab (Cat.# S0006), diluted at 1/600, was used as secondary Ab.

IMPORTANT: For western blot, incubate membrane with diluted Ab in 5% w/v milk , 1X TBS, 0.1% Tween@20 at 4°C with gentle shaking, overnight.

For Research Use Only. Not for use in diagnostic and therapeutic procedures. Not for resale without express authorization.