

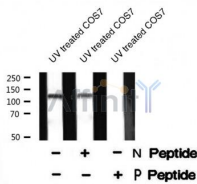
USP28 (Phospho-Ser714) Ab

Cat.#: AF8333
 Size: 50ul,100ul,200ul

Concn.: 1mg/ml
 Source: Rabbit

Mol.Wt.: 122 kDa
 Clonality: Polyclonal

Application:	WB 1:1000-3000
Reactivity:	Human
Purification:	The Ab is from purified rabbit serum by affinity purification via sequential chromatography on phospho- and non-phospho-peptide affinity columns.
Specificity:	USP28 (Phospho-Ser714) Ab detects endogenous levels of USP28 only when phosphorylated at Ser714
Immunogen:	A synthesized peptide derived from human USP28 (Phospho-Ser714)
Uniprot:	Q96RU2
Subcellular Location:	Nucleus > nucleoplasm.
Tissue Specificity:	Down-regulated upon hypoxia (PubMed:20046830). Up-regulated by the transcription factor c-Jun/JUN in a KRAS-dependent manner in colorectal cancer (CRC) cells (PubMed:24623306).
Similarity:	Belongs to the peptidase C19 family. USP28 subfamily.
Storage Condition and Buffer:	Rabbit IgG in phosphate buffered saline , pH 7.4, 150mM NaCl, 0.02% sodium azide and 50% glycerol.Store at -20 °C.Stable for 12 months from date of receipt



Western blot analysis USP28 (Phospho-Ser714) using UV treated COS7 whole cell lysates

IMPORTANT: For western blot, incubate membrane with diluted Ab in 5% w/v milk , 1X TBS, 0.1% Tween@20 at 4°C with gentle shaking, overnight.

For Research Use Only. Not for use in diagnostic and therapeutic procedures. Not for resale without express authorization.