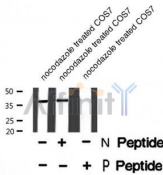


## C5AR1 (Phospho-Ser334) Ab

Cat.#: AF8362	Concn.: 1mg/ml	Mol.Wt.: 39kDa
Size: 50ul,100ul,200ul	Source: Rabbit	Clonality: Polyclonal

Application:	WB 1:1000-3000
Reactivity:	Human,Rat
Purification:	The Ab is from purified rabbit serum by affinity purification via sequential chromatography on phospho- and non-phospho-peptide affinity columns.
Specificity:	C5AR1 (Phospho-Ser334) Ab detects endogenous levels of C5AR1 only when phosphorylated at Ser334
Immunogen:	A synthesized peptide derived from human C5AR1 (Phospho-Ser334)
Uniprot:	P21730
Subcellular Location:	Cell membrane.
Similarity:	Belongs to the G-protein coupled receptor 1 family.
Storage Condition and Buffer:	Rabbit IgG in phosphate buffered saline , pH 7.4, 150mM NaCl, 0.02% sodium azide and 50% glycerol.Store at -20 °C.Stable for 12 months from date of receipt



Western blot analysis C5AR1 (Phospho-Ser334) using nocodazole treated COS7 whole cell lysates

**IMPORTANT:** For western blot, incubate membrane with diluted Ab in 5% w/v milk , 1X TBS, 0.1% Tween@20 at 4°C with gentle shaking, overnight.

For Research Use Only. Not for use in diagnostic and therapeutic procedures. Not for resale without express authorization.