

## Caspase 3 (Phospho-Ser26) Ab

Cat.#: AF8364	Concn.: 1mg/ml	Mol.Wt.: 34kDa
Size: 50ul,100ul,200ul	Source: Rabbit	Clonality: Polyclonal

**Application:** WB 1:1000-3000, IF/ICC 1:100-1:500

**Reactivity:** Human,Mouse,Rat

**Purification:** The Ab is from purified rabbit serum by affinity purification via sequential chromatography on phospho- and non-phospho-peptide affinity columns.

**Specificity:** Caspase 3 (Phospho-Ser26) Ab detects endogenous levels of Caspase 3 only when phosphorylated at Ser26

**Immunogen:** A synthesized peptide derived from human Caspase 3 (Phospho-Ser26)

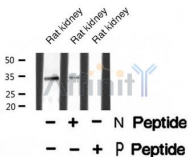
**Uniprot:** P42574

**Subcellular Location:** Cytoplasm.

**Tissue Specificity:** Highly expressed in lung, spleen, heart, liver and kidney. Moderate levels in brain and skeletal muscle, and low in testis. Also found in many cell lines, highest expression in cells of the immune system.

**Similarity:** Belongs to the peptidase C14A family.

**Storage Condition and Buffer:** Rabbit IgG in phosphate buffered saline , pH 7.4, 150mM NaCl, 0.02% sodium azide and 50% glycerol.Store at -20 °C.Stable for 12 months from date of receipt



Western blot analysis Caspase 3 (Phospho-Ser26) using Rat kidney tissue lysates



AF8364 staining Hela by IF/ICC. The sample were fixed with PFA and permeabilized in 0.1% Triton X-100, then blocked in 10% serum for 45 minutes at 25°C. The primary Ab was diluted at 1/200 and incubated with the sample for 1 hour at 37°C. An Alexa Fluor 594 conjugated goat anti-rabbit IgG (H+L) Ab, diluted at 1/600, was used as the secondary Ab.

**IMPORTANT:** For western blot, incubate membrane with diluted Ab in 5% w/v milk , 1X TBS, 0.1% Tween@20 at 4°C with gentle shaking, overnight.

For Research Use Only. Not for use in diagnostic and therapeutic procedures. Not for resale without express authorization.