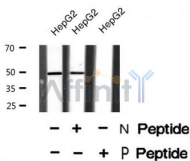


AP-2mu (Phospho-Thr156) Ab

Cat.#: AF8460	Concn.: 1mg/ml	Mol.Wt.: 49kDa
Size: 50ul,100ul,200ul	Source: Rabbit	Clonality: Polyclonal

Application:	WB 1:1000-3000
Reactivity:	Human,Mouse,Rat
Purification:	The Ab is from purified rabbit serum by affinity purification via sequential chromatography on phospho- and non-phospho-peptide affinity columns.
Specificity:	AP-2mu (Phospho-Thr156) Ab detects endogenous levels of AP-2mu only when phosphorylated at Thr156
Immunogen:	A synthesized peptide derived from human AP-2mu (Phospho-Thr156)
Uniprot:	Q96CW1
Subcellular Location:	Cell membrane. Membrane > coated pit. AP-2 appears to be excluded from internalizing CCVs and to disengage from sites of endocytosis seconds before internalization of the nascent CCV.
Similarity:	Belongs to the adaptor complexes medium subunit family.
Storage Condition and Buffer:	Rabbit IgG in phosphate buffered saline , pH 7.4, 150mM NaCl, 0.02% sodium azide and 50% glycerol.Store at -20 °C.Stable for 12 months from date of receipt



Western blot analysis AP-2mu (Phospho-Thr156) using HepG2 whole cell lysates

IMPORTANT: For western blot, incubate membrane with diluted Ab in 5% w/v milk , 1X TBS, 0.1% Tween@20 at 4°C with gentle shaking, overnight.

For Research Use Only. Not for use in diagnostic and therapeutic procedures. Not for resale without express authorization.