

## BCL-2 (Phospho-Thr74) Ab

Cat.#: AF8465	Concn.: 1mg/ml	Mol.Wt.: 28kDa
Size: 50ul,100ul,200ul	Source: Rabbit	Clonality: Polyclonal

**Application:** WB 1:1000-3000, IF/ICC 1:100-1:500

**Reactivity:** Human

**Purification:** The Ab is from purified rabbit serum by affinity purification via sequential chromatography on phospho- and non-phospho-peptide affinity columns.

**Specificity:** BCL-2 (Phospho-Thr74) Ab detects endogenous levels of BCL-2 only when phosphorylated at Thr74

**Immunogen:** A synthesized peptide derived from human BCL-2 (Phospho-Thr74)

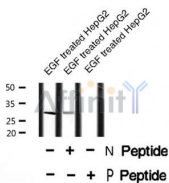
**Uniprot:** P10415

**Subcellular Location:** Mitochondrion outer membrane. Nucleus membrane. Endoplasmic reticulum membrane.

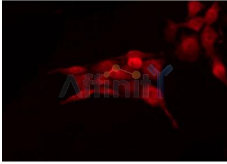
**Tissue Specificity:** Expressed in a variety of tissues.

**Similarity:** BH1 and BH2 domains are required for the interaction with BAX and for anti-apoptotic activity. The BH4 motif is required for anti-apoptotic activity and for interaction with RAF1 and EGLN3. The loop between motifs BH4 and BH3 is required for the interaction with NLRP1. Belongs to the Bcl-2 family.

**Storage Condition and Buffer:** Rabbit IgG in phosphate buffered saline , pH 7.4, 150mM NaCl, 0.02% sodium azide and 50% glycerol. Store at -20 °C. Stable for 12 months from date of receipt



Western blot analysis BCL-2 (Phospho-Thr74) using EGF treated HepG2 whole cell lysates



AF8465 staining MCF7 by IF/ICC. The sample were fixed with PFA and permeabilized in 0.1% Triton X-100, then blocked in 10% serum for 45 minutes at 25°C. The primary Ab was diluted at 1/200 and incubated with the sample for 1 hour at 37°C. An Alexa Fluor 594 conjugated goat anti-rabbit IgG (H+L) Ab, diluted at 1/600, was used as the secondary Ab.

**IMPORTANT:** For western blot, incubate membrane with diluted Ab in 5% w/v milk , 1X TBS, 0.1% Tween@20 at 4°C with gentle shaking, overnight.

For Research Use Only. Not for use in diagnostic and therapeutic procedures. Not for resale without express authorization.