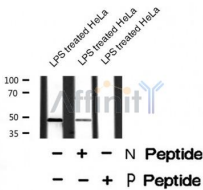


BCL-3 (Phospho-Ser402) Ab

| | | |
|------------------------|----------------|-----------------------|
| Cat.#: AF8466 | Concn.: 1mg/ml | Mol.Wt.: 47584 |
| Size: 50ul,100ul,200ul | Source: Rabbit | Clonality: Polyclonal |

| | |
|-------------------------------|---|
| Application: | WB 1:1000-3000 |
| Reactivity: | Human |
| Purification: | The Ab is from purified rabbit serum by affinity purification via sequential chromatography on phospho- and non-phospho-peptide affinity columns. |
| Specificity: | BCL-3 (Phospho-Ser402) Ab detects endogenous levels of BCL-3 only when phosphorylated at Ser402 |
| Immunogen: | A synthesized peptide derived from human BCL-3 (Phospho-Ser402) |
| Uniprot: | P20749 |
| Subcellular Location: | Nucleus. Cytoplasm. Cytoplasm > perinuclear region. Ubiquitination via 'Lys-63'-linked ubiquitin chains is required for nuclear accumulation. |
| Storage Condition and Buffer: | Rabbit IgG in phosphate buffered saline , pH 7.4, 150mM NaCl, 0.02% sodium azide and 50% glycerol.Store at -20 °C.Stable for 12 months from date of receipt |



Western blot analysis of BCL-3 (Phospho-Ser402) Ab expression in lps treated Hela cells lysates.

IMPORTANT: For western blot, incubate membrane with diluted Ab in 5% w/v milk , 1X TBS, 0.1% Tween@20 at 4°C with gentle shaking, overnight.

For Research Use Only. Not for use in diagnostic and therapeutic procedures. Not for resale without express authorization.