

CD88 (Phospho-Ser327) Ab

Cat.#: AF8468	Concn.: 1mg/ml	Mol.Wt.: 39kDa
Size: 50ul,100ul,200ul	Source: Rabbit	Clonality: Polyclonal

Application: WB 1:1000-3000

Reactivity: Human

Purification: The Ab is from purified rabbit serum by affinity purification via sequential chromatography on phospho- and non-phospho-peptide affinity columns.

Specificity: CD88 (Phospho-Ser327) Ab detects endogenous levels of CD88 only when phosphorylated at Ser327

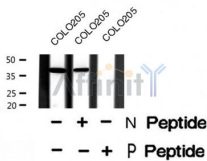
Immunogen: A synthesized peptide derived from human CD88 (Phospho-Ser327)

Uniprot: P21730

Subcellular Location: Cell membrane.

Similarity: Belongs to the G-protein coupled receptor 1 family.

Storage Condition and Buffer: Rabbit IgG in phosphate buffered saline , pH 7.4, 150mM NaCl, 0.02% sodium azide and 50% glycerol.Store at -20 °C.Stable for 12 months from date of receipt



Western blot analysis CD88 (Phospho-Ser327) using COLO205 whole cell lysates

IMPORTANT: For western blot, incubate membrane with diluted Ab in 5% w/v milk , 1X TBS, 0.1% Tween@20 at 4°C with gentle shaking, overnight.

For Research Use Only. Not for use in diagnostic and therapeutic procedures. Not for resale without express authorization.