

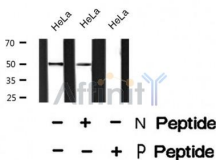
GFAP (Phospho-Ser13) Ab

Cat.#: AF8479
Size: 50ul,100ul,200ul

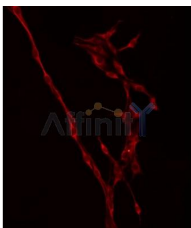
Concn.: 1mg/ml
Source: Rabbit

Mol.Wt.: 50kDa
Clonality: Polyclonal

Application:	WB 1:1000-3000, IF/ICC 1:100-1:500
Reactivity:	Human
Purification:	The Ab is from purified rabbit serum by affinity purification via sequential chromatography on phospho- and non-phospho-peptide affinity columns.
Specificity:	GFAP (Phospho-Ser13) Ab detects endogenous levels of GFAP only when phosphorylated at Ser13
Immunogen:	A synthesized peptide derived from human GFAP (Phospho-Ser13)
Uniprot:	P14136
Subcellular Location:	Cytoplasm. Associated with intermediate filaments.
Tissue Specificity:	Expressed in cells lacking fibronectin.
Similarity:	Belongs to the intermediate filament family.
Storage Condition and Buffer:	Rabbit IgG in phosphate buffered saline , pH 7.4, 150mM NaCl, 0.02% sodium azide and 50% glycerol.Store at -20 °C.Stable for 12 months from date of receipt



Western blot analysis GFAP (Phospho-Ser13) using HeLa whole cell lysates



IMPORTANT: For western blot, incubate membrane with diluted Ab in 5% w/v milk, 1X TBS, 0.1% Tween@20 at 4°C with gentle shaking, overnight.

For Research Use Only. Not for use in diagnostic and therapeutic procedures. Not for resale without express authorization.