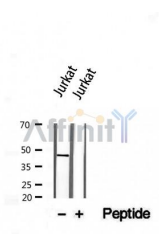


Phospho-CKB(Ser199) Ab

Cat.#: AF8602	Concn.: 1mg/ml	Mol.Wt.: 43 kDa
Size: 50ul,100ul,200ul	Source: Rabbit	Clonality: Polyclonal

Application:	WB 1:1000-3000
Reactivity:	Human,Mouse,Rat
Purification:	The Ab is from purified rabbit serum by affinity purification via sequential chromatography on phospho- and non-phospho-peptide affinity columns.
Specificity:	Phospho-CKB(S199) Ab detects endogenous levels of CKB only when phosphorylated at S199.
Immunogen:	A synthesized peptide derived from human CKB around the phosphorylation site of S199.
Uniprot:	P12277
Description:	Reversibly catalyzes the transfer of phosphate between ATP and various phosphogens (e.g. creatine phosphate). Creatine kinase isoenzymes play a central role in energy transduction in tissues with large, fluctuating energy demands, such as skeletal muscle, heart, brain and spermatzoa.
Subcellular Location:	Cytoplasm.
Similarity:	Belongs to the ATP:guanido phosphotransferase family.
Storage Condition and Buffer:	Rabbit IgG in phosphate buffered saline , pH 7.4, 150mM NaCl, 0.02% sodium azide and 50% glycerol.Store at -20 °C.Stable for 12 months from date of receipt



Western blot analysis of extracts from Jurkat, using Phospho-CKB(S199) Ab.

IMPORTANT: For western blot, incubate membrane with diluted Ab in 5% w/v milk , 1X TBS, 0.1% Tween@20 at 4°C with gentle shaking, overnight.



Affinity Biosciences
website: www.affbiotech.com
order: order@affbiotech.com

procedures. Not for resale without express authorization.