

APA050Mu01 100µg
Active Insulin Like Growth Factor 1 (IGF1)
Organism Species: *Mus musculus* (Mouse)
Instruction manual

FOR RESEARCH USE ONLY
NOT FOR USE IN CLINICAL DIAGNOSTIC PROCEDURES

1th Edition (Apr, 2016)

[PROPERTIES]

Source: Prokaryotic expression.

Host: *E. coli*

Residues: Gly33~Ala102

Tags: N-terminal His-tag

Purity: >95%

Endotoxin Level: <1.0EU per 1µg (determined by the LAL method).

Buffer Formulation: 20mM Tris, 150mM NaCl, pH8.0, containing 0.05% sarcosyl and 5% trehalose.

Applications: Cell culture; Activity Assays.

(May be suitable for use in other assays to be determined by the end user.)

Predicted isoelectric point: 7.7

Predicted Molecular Mass: 8.8kDa

Accurate Molecular Mass: 9kDa as determined by SDS-PAGE reducing conditions.

[USAGE]

Reconstitute in 20mM Tris, 150mM NaCl (pH8.0) to a concentration of 0.1-1.0 mg/mL. Do not vortex.

[STORAGE AND STABILITY]

Storage: Avoid repeated freeze/thaw cycles.

Store at 2-8°C for one month.

Aliquot and store at -80°C for 12 months.

Stability Test: The thermal stability is described by the loss rate. The loss rate was determined by accelerated thermal degradation test, that is, incubate the protein at 37°C for 48h, and no obvious degradation and precipitation were observed. The loss rate is less than 5% within the expiration date under appropriate storage condition.

[SEQUENCE]

GPETLCGA ELVDALQFVC
GPRGFYFNKP TGYGSSIRRA PQTGIVDECC FRSCDLRRLE MYCAPLKPTK
AA

[ACTIVITY]

Insulin-like growth factor 1 (IGF1), also called somatomedin C is a hormone similar in molecular structure to insulin. It plays an important role in childhood growth and continues to have anabolic effects in adults. A synthetic analog of IGF1, mecasermin, is used for the treatment of growth failure. Besides, Insulin Like Growth Factor Binding Protein 3 (IGFBP3) has been identified as an interactor of IGF1, thus a binding ELISA assay was conducted to detect the interaction of recombinant mouse IGF1 and recombinant mouse IGFBP3. Briefly, IGF1 were diluted serially in PBS, with 0.01% BSA (pH 7.4). Duplicate samples of 100µL were then transferred to IGFBP3-coated microtiter wells and incubated for 2h at 37°C. Wells were washed with PBST and incubated for 1h with anti-IGF1 pAb, then aspirated and washed 3 times. After incubation with HRP labelled secondary antibody, wells were aspirated and washed 3 times. With the addition of substrate solution, wells were incubated 15-25 minutes at 37°C. Finally, add 50µL stop solution to the wells and read at 450nm immediately. The binding activity of IGF1 and IGFBP3 was shown in Figure 1, and this effect was in a dose dependent manner.

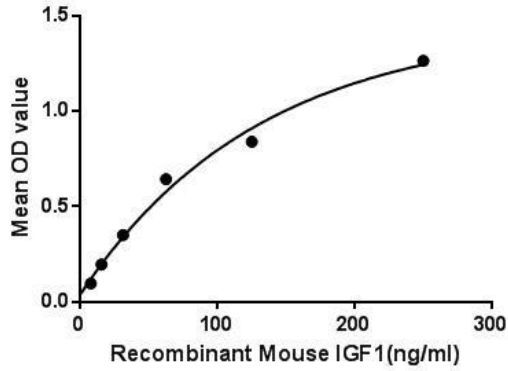


Figure 1. The binding activity of IGF1 with IGFBP3.

[IDENTIFICATION]

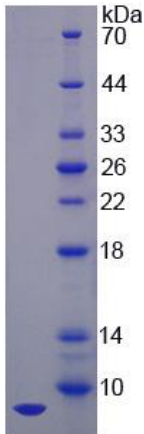


Figure 2. SDS-PAGE

Sample: Active recombinant IGF1, Mouse

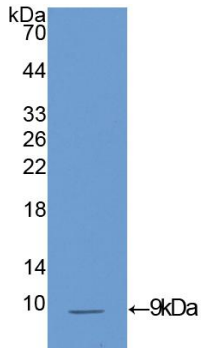


Figure 3. Western Blot

Sample: Recombinant IGF1, Mouse;

Antibody: Rabbit Anti-Mouse IGF1 Ab (PAA050Mu01)

[IMPORTANT NOTE]

The kit is designed for in vitro and research use only, we will not be responsible for any issue if the kit was used in clinical diagnostic or any other procedures.