

## Overview

<b>Description</b>	Recombinant Human ACE2 is produced by HEK293 cells and the target gene encoding Met1-Ser740 is expressed with C-10*His Tag
<b>Expression system</b>	HEK293 cells
<b>Species</b>	Homo sapiens (Human)
<b>Alternative names</b>	ACE-related carboxypeptidase,Angiotensin-converting enzyme homolog,Metalloprotease MPROT15
<b>Accession #</b>	NP_001358344.1 or Q9BYF1

## Specifications

<b>Predicted Molecular Mass</b>	94.75kDa
<b>Actual Molecular Mass</b>	100-110kDa,reducing conditions
<b>Purity</b>	>90% as determined by SDS-PAGE quantitative densitometry by Coomassie Blue Staining.
<b>Endotoxin level</b>	Please contact with the lab for this information
<b>Bioactivity</b>	Testing in progress
<b>Formulation</b>	Supplied as lyophilized from PBS, pH7.5

## Preparation and storage

<b>Shipping</b>	In general, proteins are shipped out with blue ice unless customers require otherwise.
<b>Stability &amp;Storage</b>	Use a manual defrost freezer and avoid repeated freeze thaw cycles. Store at 2 to 8 °C for one week . Store at -20 to -80 °C for twelve months from the date of receipt.
<b>Reconstitution</b>	Reconstitute in ddH <sub>2</sub> O to a concentration of 0.1-1.0 mg/mL. Do not vortex.

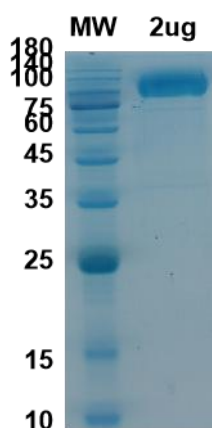
## Background

---

Angiotensin-Converting Enzyme 2 (ACE-2) is an integral membrane protein and a zinc metalloprotease of the ACE family, the ACE family includes somatic and germinal ACE. ACE-2 cleaves angiotensins I and II as a carboxypeptidase, ACE-2 converts angiotensin I to angiotensin 1-9, and angiotensin II to angiotensin 1-7. ACE-2 is also able to hydrolyze apelin-13 and dynorphin-13 with high efficiency. ACE-2 can be high expressed in testis, kidney and heart, in colon, small intestine and ovary at moderate levels. Captopril and lisinopril as the classical ACE inhibitor don't inhibit ACE-2 activity. ACE-2 may play an important role in regulating the heart function.

## SDS-PAGE image

---



## Note

---

For research use only .Not for use in clinical diagnostic procedures.