

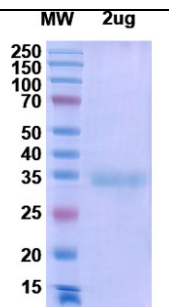
Product Details

Summary

Product name	Recombinant SARS-CoV-2 (2019-nCoV) S Protein RBD(R346K, E484K, N501Y, D614G, P681H)
Catalog#	ATMP02533COV
description	Recombinant SARS-CoV-2 S Protein RBD(R346K, E484K, N501Y, D614G, P681H) is produced by Mammalian cells expression system and the target gene is expressed with C-His Tag. The exact sequence is proprietary.
Expression system	Mammalian cells
Species	Severe acute respiratory syndrome coronavirus 2 (SARS-CoV-2)
Accession #	YP_009724390.1(R346K, E484K, N501Y, D614G, P681H)
Alternative names	Colombia Mu Variant(B.1.621)
Actual Molecular Mass	35kDa
Purity	>90% as determined by SDS-PAGE
Endotoxin level	Please contact with the lab for this information
Formulation	Supplied as solution form in PBS, pH7.5 or lyophilized from PBS, pH7.5
Shipping	In general, proteins are shipped out with blue ice unless customers require otherwise.
Stability &Storage	Use a manual defrost freezer and avoid repeated freeze thaw cycles. Store at 2 to 8 °C for one week . Store at -20 to -80 °C for twelve months from the date of receipt.
Reconstitution	Please refer to the instruction in the hard copy of COA.
Application	Immunogen



SDS-PAGE image



SDS-PAGE Image

Background

Protein S (PROS1) is glycoprotein and expressed in many cell types supporting its reported involvement in multiple biological processes that include coagulation, apoptosis, cancer development and progression, and the innate immune response. Known receptors bind S1 are ACE2, angiotensin-converting enzyme 2, DPP4, CEACAM etc.. The spike (S) glycoprotein of coronaviruses is known to be essential in the binding of the virus to the host cell at the advent of the infection process. Most notable is severe acute respiratory syndrome (SARS). The severe acute respiratory syndrome-coronavirus (SARS-CoV) spike (S) glycoprotein alone can mediate the membrane fusion required for virus entry and cell fusion. It is also a major immunogen and a target for entry inhibitors. It's been reported that 2019-nCoV can infect the human respiratory epithelial cells through interaction with the human ACE2 receptor. The spike protein is a large type I transmembrane protein containing two subunits, S1 and S2. S1 mainly contains a receptor binding domain (RBD), which is responsible for recognizing the cell surface receptor. S2 contains basic elements needed for the membrane fusion. The S protein plays key parts in the induction of neutralizing-antibody and T-cell responses, as well as protective immunity.

Note

For research use only .Not for use in clinical diagnostic procedures.