

## Product Details

### Summary

<b>Product name</b>	Anti SARS-CoV-2(2019-nCoV) 3C-like Proteinase polyclonal antibody
<b>Catalog#</b>	ATP236
<b>description</b>	Produced in rabbits immunized with purified, Recombinant SARS-CoV-2 3C-like Proteinase
<b>Accession #</b>	P0DTC1
<b>Alternative names</b>	3C-like proteinase ,3CL-PRO,3CLp,Main protease,Mpro,Non-structural protein 5, SARS coronavirus main proteinase,Replicase polyprotein 1a
<b>Stability &amp;Storage</b>	Use a manual defrost freezer and avoid repeated freeze thaw cycles. Store at 2 to 8 °C for one week . Store at -20 to -81 °C for twelve months from the date of receipt.
<b>Spcificity</b>	Recognizes SARS-CoV-2 3C-like Proteinase
<b>Isotype</b>	IgG
<b>Host</b>	Rabbit
<b>Clonality</b>	Polyclonal
<b>Conjugation</b>	Unconjugate
<b>Species reactivity</b>	Severe acute respiratory syndrome coronavirus 2 (2019-nCoV) (SARS-CoV-2)
<b>Tested applications</b>	Elisa
<b>Immunogen</b>	Recombinant SARS-CoV-2 3C-like Proteinase(S3264-T3567)

### Background

Cleaves the C-terminus of replicase polyprotein at 11 sites (By similarity). Recognizes substrates containing the core sequence [ILMVF]-Q-[-[SGACN]. Also able to bind an ADP-ribose-1"-phosphate (ADRP) (By similarity).

### Product performance

<b>Form</b>	Liquid
<b>Buffer</b>	PBS, pH7.4, containing 0.05% proclin300, 50% glycerol.
<b>Concentration</b>	0.31mg/ml
<b>MW</b>	33kDa

### Application

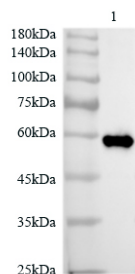


Dilution Range

Elisa: 1:4000~1:8000

### Tested Picture

---



Lysate: 0.1 μg/lane  
Lane 1: Recombinant SARS-CoV-2  
NSP5 Protein

Predicted band size: 59kDa  
Observed band size: 59kDa

Recombinant Protein lysates were subjected to SDS PAGE followed by western blot with rabbit anti SARS-CoV-2 (2019-nCoV) NSP5 antibody at dilution of 1:32000.

### Note

---

For research use only.

