

### Product Details

#### Summary

<b>Product name</b>	Anti SARS-CoV-2(2019-nCoV) NSP16 polyclonal antibody
<b>Catalog#</b>	ATP251
<b>description</b>	Produced in rabbits immunized with purified, Recombinant SARS-CoV-2 NSP16 protein
<b>Accession #</b>	P0DTD1
<b>Alternative names</b>	Non-structural protein 16, Replicase polyprotein 1ab, 2'-O-methyltransferase
<b>Stability &amp; Storage</b>	Use a manual defrost freezer and avoid repeated freeze thaw cycles. Store at 2 to 8 °C for one week . Store at -20 to -96 °C for twelve months from the date of receipt.
<b>Spicifcty</b>	Recognizes SARS-CoV-2 NSP16 protein
<b>Isotype</b>	IgG
<b>Host</b>	Rabbit
<b>Clonality</b>	Polyclonal
<b>Conjugation</b>	Unconjugate
<b>Species reactivity</b>	Severe acute respiratory syndrome coronavirus 2 (2019-nCoV) (SARS-CoV-2)
<b>Tested applications</b>	Elisa
<b>Immunogen</b>	Recombinant SARS-CoV-2 NSP16(Ser6799-Asn7096)

#### Background

Nsp14 and nsp16, are involved in viral mRNA cap formation. The crystal structure of nsp16 is unknown. Nsp16 is an RNA-cap Adomet-dependent(nucleoside-2 -o-)methyltransferase that is only active in the presence of nsp10.

#### Product performance

<b>Form</b>	Liquid
<b>Buffer</b>	PBS, pH7.4, containing 0.05% proclin300, 50% glycerol.
<b>Concentration</b>	0.65mg/ml
<b>MW</b>	34kDa

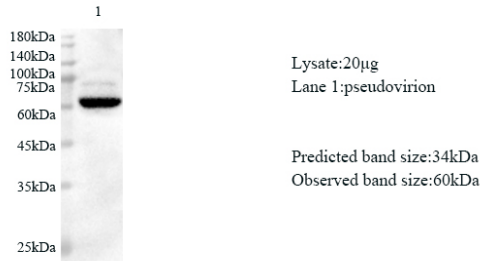
#### Application

<b>Dilution Range</b>	Elisa: 1:4000~1:8000
-----------------------	----------------------



## Tested Picture

---



Various lysates were subjected to SDS PAGE followed by western blot with SARS-CoV-2(2019-nCoV) NSP16 antibody at dilution of 1:1000.

## Note

---

For research use only.