

TWF1 Ab

Cat.#: BF0040
Size: 50ul,100ul,200ul

Concn.: 1mg/ml
Source: Mouse

Mol.Wt.: 40.3kDa
Clonality: Monoclonal

Application:	ELISA 1/10000, WB 1/500 - 1/2000, IHC 1/200 - 1/1000, ICC 1/200 - 1/1000, FCM 1/200 - 1/400
Reactivity:	Human
Purification:	Affinity-chromatography.
Specificity:	TWF1 Ab detects endogenous levels of total TWF1.
Immunogen:	Purified recombinant fragment of human TWF1 expressed in E. Coli.
Uniprot:	Q12792
Description:	This gene encodes twinfilin, an actin monomer-binding protein conserved from yeast to mammals. Studies of the mouse counterpart suggest that this protein may be an actin monomer-binding protein, and its localization to cortical G-actin-rich structures may be regulated by the small GTPase RAC1.
Subcellular Location:	Cytoplasm. Cytoplasm > cytoskeleton. Diffuse cytoplasmic localization with perinuclear and G-actin-rich cortical actin structures sublocalization. Also found at membrane ruffles and cell-cell contacts.
Tissue Specificity:	Expressed at high levels in the colon, testis, ovary, prostate and lung. Expressed at lower levels in the brain, bladder and heart. Not detected in liver.
Similarity:	Belongs to the actin-binding proteins ADF family. Twinfilin subfamily.
Storage Condition and Buffer:	Mouse IgG1 in phosphate buffered saline (without Mg ²⁺ and Ca ²⁺), pH 7.4, 150mM NaCl, 0.02% sodium azide and 50% glycerol.Store at -20 °C.Stable for 12 months from date of receipt.

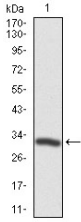


Figure 1: Western blot analysis using TWF1 mAb against human TWF1 recombinant protein. (Expected MW is 31.1 kDa)

IMPORTANT: For western blot, incubate membrane with diluted primary Ab in 5% w/v milk , 1X TBS, 0.1% Tween@20 at 4°C with gentle shaking, overnight.

For Research Use Only. Not for use in diagnostic and therapeutic procedures. Not for resale without express authorization.