

HER-2 Ab

Cat.#: BF0077
 Size: 50ul,100ul,200ul

Concn.: 1mg/ml
 Source: Mouse

Mol.Wt.: 138kDa
 Clonality: Monoclonal

Application:	ELISA 1/10000, WB 1/500 - 1/2000, IHC 1/200 - 1/1000
Reactivity:	Human
Purification:	Affinity-chromatography.
Specificity:	HER-2 Ab detects endogenous levels of total HER-2.
Immunogen:	Purified recombinant fragment of human HER-2 expressed in E. Coli.
Uniprot:	P04626
Description:	The C-erbB-2 (HER-2/neu) gene encodes a member of the epidermal growth factor (EGF) receptor family of receptor tyrosine kinases. Amplification or overexpression of this gene has been reported in numerous cancers, including breast and ovarian tumors.
Subcellular Location:	Cytoplasm. Nucleus and Cell membrane. Cytoplasm, perinuclear region. Nucleus. Translocation to the nucleus requires endocytosis, probably endosomal sorting and is mediated by importin beta-1/KPNB1.
Tissue Specificity:	Expressed in a variety of tumor tissues including primary breast tumors and tumors from small bowel, esophagus, kidney and mouth.
Similarity:	Belongs to the protein kinase superfamily. Tyr protein kinase family. EGF receptor subfamily.
Storage Condition and Buffer:	Mouse IgG1 in phosphate buffered saline (without Mg ²⁺ and Ca ²⁺), pH 7.4, 150mM NaCl, 0.02% sodium azide and 50% glycerol.Store at -20 °C.Stable for 12 months from date of receipt.

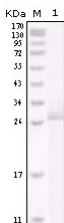


Figure 1: Western blot analysis using HER-2 mouse mAb against truncated HER-2 recombinant protein.

IMPORTANT: For western blot, incubate membrane with diluted primary Ab in 5% w/v milk , 1X TBS, 0.1% Tween@20 at 4°C with gentle shaking, overnight.

For Research Use Only. Not for use in diagnostic and therapeutic procedures. Not for resale without express authorization.