

UBE2I Ab

Cat.#: BF0087	Concn.: 1mg/ml	Mol.Wt.: 18kDa
Size: 50ul,100ul,200ul	Source: Mouse	Clonality: Monoclonal

Application: ELISA 1/10000, WB 1/500 - 1/2000, IHC 1/200 - 1/1000, ICC 1/200 - 1/1000, FCM 1/200 - 1/400

Reactivity: Human,Monkey

Purification: Affinity-chromatography.

Specificity: UBE2I Ab detects endogenous levels of total UBE2I.

Immunogen: Purified recombinant fragment of human UBE2I expressed in E. Coli.

Uniprot: P63279

Description: The modification of proteins with ubiquitin is an important cellular mechanism for targeting abnormal or short-lived proteins for degradation. Ubiquitination involves at least three classes of enzymes: ubiquitin-activating enzymes, or E1s, ubiquitin-conjugating enzymes, or E2s, and ubiquitin-protein ligases, or E3s.

Subcellular Location: Nucleus. Cytoplasm. Mainly nuclear. In spermatocytes, localizes in synaptonemal complexes. Recruited by BCL11A into the nuclear body.

Tissue Specificity: Expressed in heart, skeletal muscle, pancreas, kidney, liver, lung, placenta and brain. Also expressed in testis and thymus.

Similarity: Belongs to the ubiquitin-conjugating enzyme family.

Storage Condition and Buffer: Mouse IgG1 in phosphate buffered saline (without Mg²⁺ and Ca²⁺), pH 7.4, 150mM NaCl, 0.02% sodium azide and 50% glycerol.Store at -20 °C.Stable for 12 months from date of receipt.

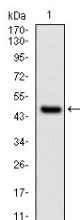


Figure 1: Western blot analysis using UBE2I mAb against human UBE2I (AA: 1-158) recombinant protein. (Expected MW is 45.3 kDa)

IMPORTANT: For western blot, incubate membrane with diluted primary Ab in 5% w/v milk , 1X TBS, 0.1% Tween@20 at 4°C with gentle shaking, overnight.

For Research Use Only. Not for use in diagnostic and therapeutic procedures. Not for resale without express authorization.