

PTH Ab

Cat.#: BF0160	Concn.: 1mg/ml	Mol.Wt.: 12.9kDa
Size: 50ul,100ul,200ul	Source: Mouse	Clonality: Monoclonal

Application: ELISA 1/10000, WB 1/500 - 1/2000

Reactivity: Human

Purification: Affinity-chromatography.

Specificity: PTH Ab detects endogenous levels of total PTH.

Immunogen: Purified recombinant fragment of human PTH expressed in E. Coli.

Uniprot: P01270

Description: The protein encoded by this gene is a hormone secreted by parathyroid cells. This hormone elevates blood Ca²⁺ level by dissolving the salts in bone and preventing their renal excretion. Defects in this gene are a cause of familial isolated hypoparathyroidism (FIH).

Subcellular Location: Secreted.

Similarity: Belongs to the parathyroid hormone family.

Storage Condition and Buffer: Mouse IgG1 in phosphate buffered saline (without Mg²⁺ and Ca²⁺), pH 7.4, 150mM NaCl, 0.02% sodium azide and 50% glycerol.Store at -20 °C.Stable for 12 months from date of receipt.

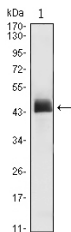


Figure 1: Western blot analysis using PTH mAb against PTH(AA: 1-115)-hlgGfC transfected HEK293 cell lysate.

IMPORTANT: For western blot, incubate membrane with diluted primary Ab in 5% w/v milk , 1X TBS, 0.1% Tween@20 at 4°C with gentle shaking, overnight.

For Research Use Only. Not for use in diagnostic and therapeutic procedures. Not for resale without express authorization.