

ATXN1 Ab

Cat.#: BF0249
Size: 50ul,100ul,200ul

Concn.: 1mg/ml
Source: Mouse

Mol.Wt.: 87kDa
Clonality: Monoclonal

Application:	ELISA 1/10000, WB 1/500 - 1/2000, IHC 1/200 - 1/1000, ICC 1/200 - 1/1000, FCM 1/200 - 1/400
Reactivity:	Human
Purification:	Affinity-chromatography.
Specificity:	ATXN1 Ab detects endogenous levels of total ATXN1.
Immunogen:	Purified recombinant fragment of human ATXN1 expressed in E. Coli.
Uniprot:	P54253
Description:	ataxin-1 is a spinocerebellar ataxia type 1 (SCA1) protein. Expansion of CAG repeats in the SCA1 gene results in an abnormally long polyglutamine tract in the protein, causing polyglutamine-induced neurodegeneration. 14-3-3 and Akt kinase stabilize both wild-type and mutant forms of ataxin-1. The expansion of the polyglutamine tract may alter this function.
Subcellular Location:	Cytoplasm. Nucleus. Colocalizes with USP7 in the nucleus.
Tissue Specificity:	Widely expressed throughout the body.
Similarity:	The AXH domain is required for interaction with CIC.Belongs to the ATXN1 family.
Storage Condition and Buffer:	Mouse IgG1 in phosphate buffered saline (without Mg ²⁺ and Ca ²⁺), pH 7.4, 150mM NaCl, 0.02% sodium azide and 50% glycerol.Store at -20 °C.Stable for 12 months from date of receipt.

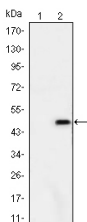
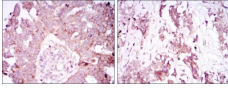
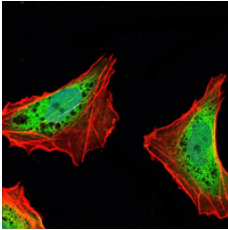


Figure 1: Western blot analysis using ATXN1 mAb against HEK293 (1) and ATXN1(AA: 645-815)-hlgGfC transfected HEK293 (2) cell lysate.



Immunohistochemical analysis of paraffin-embedded ovarian cancer tissues (left) and lung cancer tissues (right) using ATXN1 mouse mAb with DAB staining.



Immunofluorescence analysis of NTERA-2 cells using ATXN1 mouse mAb (green). Blue: DRAQ5 fluorescent DNA dye. Red: Actin filaments have been labeled with Alexa Fluor-555 phalloidin.

IMPORTANT: For western blot, incubate membrane with diluted primary Ab in 5% w/v milk , 1X TBS, 0.1% Tween@20 at 4°C with gentle shaking, overnight.

For Research Use Only. Not for use in diagnostic and therapeutic procedures. Not for resale without express authorization.