

ABL2 Ab

Cat.#: BF0255
Size: 50ul,100ul,200ul

Concn.: 1mg/ml
Source: Mouse

Mol.Wt.: 128kDa
Clonality: Monoclonal

Application:	ELISA 1/10000, WB 1/500 - 1/2000, ICC 1/200 - 1/1000
Reactivity:	Human,Mouse
Purification:	Affinity-chromatography.
Specificity:	ABL2 Ab detects endogenous levels of total ABL2.
Immunogen:	Purified recombinant fragment of human ABL2 expressed in E. Coli.
Uniprot:	P42684
Description:	ABL2 is a cytoplasmic tyrosine kinase which is closely related to but distinct from ABL1. The similarity of the proteins includes the tyrosine kinase domains and extends amino-terminal to include the SH2 and SH3 domains. ABL2 is expressed in both normal and tumor cells. The ABL2 gene product is expressed as two variants bearing different amino termini, both approximately 12-kb in length.
Subcellular Location:	Cytoplasm, cytoskeleton.
Tissue Specificity:	Widely expressed.
Similarity:	Contains two distinct classes of F-actin-binding domains. Although both can bind F-actin, the 2 are required to bundle actin filaments (By similarity).Belongs to the protein kinase superfamily. Tyr protein kinase family. ABL subfamily.
Storage Condition and Buffer:	Mouse IgG1 in phosphate buffered saline (without Mg ²⁺ and Ca ²⁺), pH 7.4, 150mM NaCl, 0.02% sodium azide and 50% glycerol.Store at -20 °C.Stable for 12 months from date of receipt.

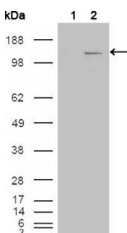


Figure 1: Western blot analysis using ABL2 mouse mAb against HEK293T cells transfected with the pCMV6-ENTRY control (1) and pCMV6-ENTRY ABL2 cDNA (2).

IMPORTANT: For western blot, incubate membrane with diluted primary Ab in 5% w/v milk , 1X TBS, 0.1% Tween@20 at 4°C with gentle shaking, overnight.

For Research Use Only. Not for use in diagnostic and therapeutic procedures. Not for resale without express authorization.