

## **ATF2 Ab**

Cat.#: BF0280  
Size: 50ul,100ul,200ul

Concn.: 1mg/ml  
Source: Mouse

Mol.Wt.: 55kDa  
Clonality: Monoclonal

Application:	ELISA 1/10000, WB 1/500 - 1/2000, IHC 1/200 - 1/1000, IF/ICC 1:100-1:500
Reactivity:	Human,Mouse
Purification:	Affinity-chromatography.
Specificity:	ATF2 Ab detects endogenous levels of total ATF2.
Immunogen:	Purified recombinant fragment of human ATF2 expressed in E. Coli.
Uniprot:	P15336
Description:	This gene encodes a transcription factor that is a member of the leucine zipper family of DNA binding proteins. This protein binds to the cAMP-responsive element (CRE), an octameric palindrome. The protein forms a homodimer or heterodimer with c-Jun and stimulates CRE-dependent transcription. The protein is also a histone acetyltransferase (HAT) that specifically acetylates histones H2B and H4 in vitro; thus it may represent a class of sequence-specific factors that activate transcription by direct effects on chromatin components. Additional transcript variants have been identified but their biological validity has not been determined.
Subcellular Location:	Nucleus.
Tissue Specificity:	Ubiquitously expressed, with more abundant expression in the brain.
Similarity:	The nuclear export signal 1 (N-NES) negatively regulates its nuclear localization and transcriptional activity.Belongs to the bZIP family. ATF subfamily.
Storage Condition and Buffer:	Mouse IgG1 in phosphate buffered saline (without Mg <sup>2+</sup> and Ca <sup>2+</sup> ), pH 7.4, 150mM NaCl, 0.02% sodium azide and 50% glycerol.Store at -20 °C.Stable for 12 months from date of receipt.

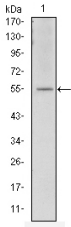


Figure 1: Western blot analysis using ATF2 mouse mAb against NIH/3T3 cell lysate.

**IMPORTANT:** For western blot, incubate membrane with diluted primary Ab in 5% w/v milk , 1X TBS, 0.1% Tween@20 at 4°C with gentle shaking, overnight.

For Research Use Only. Not for use in diagnostic and therapeutic procedures. Not for resale without express authorization.