

KLHL21 Ab

Cat.#: BF0284
Size: 50ul,100ul,200ul

Concn.: 1mg/ml
Source: Mouse

Mol.Wt.: 66kDa
Clonality: Monoclonal

Application:	ELISA 1/10000, WB 1/500 - 1/2000, IHC 1/200 - 1/1000
Reactivity:	Human
Purification:	Affinity-chromatography.
Specificity:	KLHL21 Ab detects endogenous levels of total KLHL21.
Immunogen:	Purified recombinant fragment of human KLHL21 expressed in E. Coli.
Uniprot:	Q9UJP4
Description:	Probable substrate-specific adapter of an E3 ubiquitin-protein ligase complex which mediates the ubiquitination and subsequent proteasomal degradation of target proteins.
Subcellular Location:	Cytoplasm > cytoskeleton > spindle. Localizes to the spindle midzone and targets CUL3 to this region.
Storage Condition and Buffer:	Mouse IgG1 in phosphate buffered saline (without Mg ²⁺ and Ca ²⁺), pH 7.4, 150mM NaCl, 0.02% sodium azide and 50% glycerol.Store at -20 °C.Stable for 12 months from date of receipt.

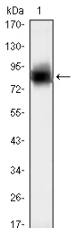


Figure 1: Western blot analysis using KLHL21 mAb against human KLHL21 (AA: 250-597) recombinant protein. (Expected MW is 64.4 kDa)

IMPORTANT: For western blot, incubate membrane with diluted primary Ab in 5% w/v milk , 1X TBS, 0.1% Tween@20 at 4°C with gentle shaking, overnight.

For Research Use Only. Not for use in diagnostic and therapeutic procedures. Not for resale without express authorization.