

CSF2 Ab

Cat.#: BF0506
Size: 50ul,100ul,200ul

Concn.: 1mg/ml
Source: Mouse

Mol.Wt.: 16kDa
Clonality: Monoclonal

| | |
|-------------------------------|--|
| Application: | ELISA 1/10000, WB 1/500 - 1/2000 |
| Reactivity: | Human |
| Purification: | Affinity-chromatography. |
| Specificity: | CSF2 Ab detects endogenous levels of total CSF2. |
| Immunogen: | Purified recombinant fragment of human CSF2 expressed in E. Coli. |
| Uniprot: | P04141 |
| Description: | The protein encoded by this gene is a cytokine that controls the production, differentiation, and function of granulocytes and macrophages. The active form of the protein is found extracellularly as a homodimer. This gene has been localized to a cluster of related genes at chromosome region 5q31, which is known to be associated with interstitial deletions in the 5q- syndrome and acute myelogenous leukemia. Other genes in the cluster include those encoding interleukins 4, 5, and 13. |
| Subcellular Location: | Secreted. |
| Similarity: | Belongs to the GM-CSF family. |
| Storage Condition and Buffer: | Mouse IgG1 in phosphate buffered saline (without Mg ²⁺ and Ca ²⁺), pH 7.4, 150mM NaCl, 0.02% sodium azide and 50% glycerol.Store at -20 °C.Stable for 12 months from date of receipt. |

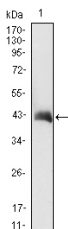


Figure 1: Western blot analysis using CSF2 mAb against CSF2(AA: 18-144)-hIgGFc transfected HEK293 cell lysate.

IMPORTANT: For western blot, incubate membrane with diluted primary Ab in 5% w/v milk , 1X TBS, 0.1% Tween@20 at 4°C with gentle shaking, overnight.



Affinity Biosciences

website:www.affbiotech.com

order:order@affbiotech.com

For Research Use Only. Not for use in diagnostic and therapeutic procedures. Not for resale without express authorization.