

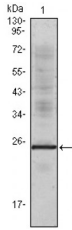
## IL-1a Ab

Cat.#: BF0521  
Size: 50ul,100ul,200ul

Concn.: 1mg/ml  
Source: Mouse

Mol.Wt.: 17/31kDa.  
Clonality: Monoclonal

Application:	ELISA 1/10000, WB 1/500 - 1/2000
Reactivity:	Human
Purification:	Affinity-chromatography.
Specificity:	IL-1a Ab detects endogenous levels of total IL-1a.
Immunogen:	Purified recombinant fragment of human IL-1a expressed in E. Coli.
Uniprot:	P01583
Description:	Interleukin-1alpha is a member of the interleukin 1 cytokine family. It is a pleiotropic cytokine involved in various immune responses, inflammatory processes, and hematopoiesis. This cytokine is produced by monocytes and macrophages as a proprotein, which is proteolytically processed and released in response to cell injury, and thus induces apoptosis. IL-1 alpha and eight other interleukin 1 family genes form a cytokine gene cluster on chromosome 2. It has been suggested that the polymorphism of these genes is associated with rheumatoid arthritis and Alzheimer's disease
Subcellular Location:	Secreted. The lack of a specific hydrophobic segment in the precursor sequence suggests that IL-1 is released by damaged cells or is secreted by a mechanism differing from that used for other secretory proteins.
Similarity:	The similarity among the IL-1 precursors suggests that the amino ends of these proteins serve some as yet undefined function.Belongs to the IL-1 family.
Storage Condition and Buffer:	Mouse IgG1 in phosphate buffered saline (without Mg <sup>2+</sup> and Ca <sup>2+</sup> ), pH 7.4, 150mM NaCl, 0.02% sodium azide and 50% glycerol.Store at -20 °C.Stable for 12 months from date of receipt.



Western blot analysis using IL1a mouse mAb against truncated IL1a recombinant protein.

**IMPORTANT:** For western blot, incubate membrane with diluted primary Ab in 5% w/v milk , 1X TBS, 0.1% Tween@20 at 4°C with gentle shaking, overnight.

For Research Use Only. Not for use in diagnostic and therapeutic procedures. Not for resale without express authorization.