

HIF1 alpha Mouse monoclonal Ab

[References\(12\)](#) [Images\(13\)](#)

Cat.#: BF8002	Concn.: ~1mg/ml	Mol.Wt.: 120kDa
Size: 100ul	Source: Mouse	Clonality: Monoclonal

Application: WB 1:500-1:2000, IHC 1:50-1:200, IF/ICC 1:100-1:500
*The optimal dilutions should be determined by the end user.

Reactivity: Human,Mouse,Rat

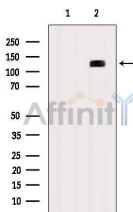
Storage: Mouse IgG in phosphate buffered saline , pH 7.4, 150mM NaCl, 0.02% sodium azide and 50% glycerol.Stable for 15 months from date of receipt. Store at -20 °C. Stable for 12 months from date of receipt.

Purification: The ascites was purified by peptide affinity chromatography using SulfoLink™ Coupling Resin (Thermo Fisher Scientific).

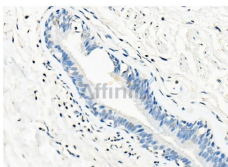
Immunogen: A synthesized peptide derived from human HIF1a.

Uniprot: Q16665

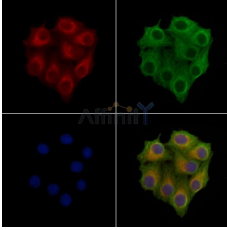
Description: Cell growth and viability is compromised by oxygen deprivation (hypoxia). Hypoxia-inducible factors, including HIF-1?, Arnt 1 (also designated HIF-1?), EPAS-1 (also designated HIF-2?) and HIF-3?, induce glycolysis, erythropoiesis and angiogenesis in order to restore oxygen homeostasis. Hypoxia-inducible factors are members of the Per-Arnt-Sim (PAS) domain transcription factor family.



Western blot analysis on HB16F10 cells lysates using HIF1 alpha mouse monoclonal Ab



BF8002 at 1/100 staining Human liver cancer by IHC-P. The sample was formaldehyde fixed and a heat mediated antigen retrieval step in citrate buffer was performed. The sample was then blocked and incubated with the primary Ab at 4°C overnight. An HRP conjugated anti-Mouse Ab was used as the secondary Ab.



BF8002 staining HeLa cells by IF/ICC. The samples were fixed with PFA and permeabilized in 0.1% Triton X-100, then blocked in 10% serum for 45 minutes at 25°C. Samples were then incubated with primary Ab(BF8002) and rabbit anti-beta tubulin Ab(AF7011) for 1 hour at 37°C. An AlexaFluor594 conjugated goat anti-mouse IgG(H+L) Ab(Red) and an AlexaFluor488 conjugated goat anti-rabbit IgG(H+L) Ab(Green) were used as the secondary Ab.

The nuclear counter stain is DAPI (blue).

IMPORTANT: For western blot, incubate membrane with diluted primary Ab in 5% w/v milk , 1X TBS, 0.1% Tween@20 at 4°C with gentle shaking, overnight.

For Research Use Only. Not for use in diagnostic and therapeutic procedures. Not for resale without express authorization.