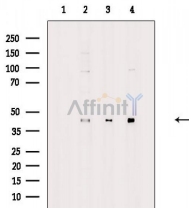


p38 MAPK Monoclonal Ab

[References\(4\)](#) [Images\(6\)](#)

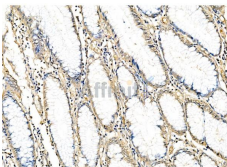
Cat.#: BF8015	Concn.: ~1mg/ml	Mol.Wt.: 43 kDa
Size: 100ul	Source: Mouse	Clonality: Monoclonal

Application:	WB 1:5000-1:10000, IHC 1:50-1:200 *The optimal dilutions should be determined by the end user.
Reactivity:	Human,Mouse,Rat
Storage:	Mouse IgG1 in phosphate buffered saline (without Mg ²⁺ and Ca ²⁺), pH 7.4, 150mM NaCl, 0.02% sodium azide and 50% glycerol. Store at -20 °C. Stable for 12 months from date of receipt.
Purification:	Affinity-chromatography.
Immunogen:	A synthesized peptide derived from human p38 MAPK.
Uniprot:	Q16539



Western blot analysis of extracts from various samples, using p38 MAPK Monoclonal Ab.

Lane 1: Mouse brain, blocked with antigen-specific peptides,
 Lane 2: Mouse brain,
 Lane 3: Rat brain,
 Lane 4: HepG2 cells.



BF8015 at 1/100 staining Human colorectal cancer by IHC-P. The sample was formaldehyde fixed and a heat mediated antigen retrieval step in citrate buffer was performed. The sample was then blocked and incubated with the primary Ab at 4°C overnight. An HRP conjugated anti-Mouse Ab was used as the secondary Ab.

IMPORTANT: For western blot, incubate membrane with diluted primary Ab in 5% w/v milk, 1X TBS, 0.1% Tween@20 at 4°C with gentle shaking, overnight.

For Research Use Only. Not for use in diagnostic and therapeutic procedures. Not for resale without express authorization.