

DDIT3/CHOP mouse monoclonal Ab

Images(6)

Cat.#: BF8018 Concn.: ~1mg/ml Mol.Wt.: 19~30kD
Size: 100ul Source: Mouse Clonality: Monoclonal

Application: IHC 1:50-1:200, WB 1:500-1:2000
*The optimal dilutions should be determined by the end user.

Reactivity: Mouse,Rat

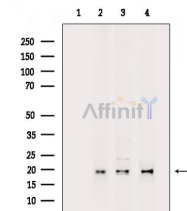
Storage: Rabbit IgG in phosphate buffered saline , pH 7.4, 150mM NaCl, 0.02% sodium azide and 50% glycerol. Store at -20 °C. Stable for 12 months from date of receipt.

Purification: The antiserum was purified by peptide affinity chromatography using SulfoLink™ Coupling Resin (Thermo Fisher Scientific).

Immunogen: A synthesized peptide derived from human DDIT3, corresponding to a region within N-terminal amino acids.

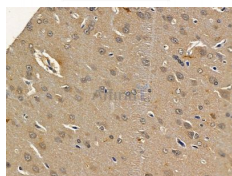
Uniprot: P35638

Description: CHOP was identified as a C/EBP-homologous protein that inhibits C/EBP and LAP in a dominant-negative manner . CHOP expression is induced by certain cellular stresses including starvation and the induced CHOP suppresses cell cycle progression from G1 to S phase . Later it was shown that, during ER stress, the level of CHOP expression is elevated and CHOP functions to mediate programmed cell death . Studies also found that CHOP mediates the activation of GADD34 and Ero1-L? expression during ER stress. GADD34 in turn dephosphorylates phospho-Ser51 of eIF2? thereby stimulating protein synthesis. Ero1-L? promotes oxidative stress inside the endoplasmic reticulum (ER) .



Western blot analysis of extracts from various samples, using DDIT3/CHOP mouse monoclonal Ab.

- Lane 1: Rat lung, blocked with antigen-specific peptides,
- Lane 2: Rat lung,
- Lane 3: Mouse kidney,
- Lane 4: Mouse heart.



BF8018 at 1/100 staining rat brain tissue by IHC-P. The sample was formaldehyde fixed and a heat mediated antigen retrieval step in citrate buffer was performed. The sample was then blocked and incubated with the primary Ab at 4°C overnight. An HRP conjugated anti-mouse Ab was used as the secondary Ab.

IMPORTANT: For western blot, incubate membrane with diluted primary Ab in 5% w/v milk , 1X TBS, 0.1% Tween@20 at 4°C with gentle shaking, overnight.

For Research Use Only. Not for use in diagnostic and therapeutic procedures. Not for resale without express authorization.