

Galectin 3 Mouse Monoclonal Ab

[Images\(2\)](#)

Cat.#: BF8044	Concn.: ~1mg/ml	Mol.Wt.: 27kDa
Size: 100ul	Source: Mouse	Clonality: Monoclonal

Application: IHC 1:50-1:200, WB 1:500-1:3000
 *The optimal dilutions should be determined by the end user.

Reactivity: Human,Mouse,Rat

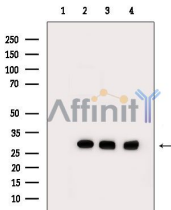
Storage: Mouse IgG1 in phosphate buffered saline (without Mg²⁺ and Ca²⁺), pH 7.4, 150mM NaCl, 0.02% sodium azide and 50% glycerol. Store at -20 °C. Stable for 12 months from date of receipt. Store at -20 °C. Stable for 12 months from date of receipt.

Purification: Affinity-chromatography.

Immunogen: A synthesized peptide derived from human Galectin 3, corresponding to a region within the internal amino acids.

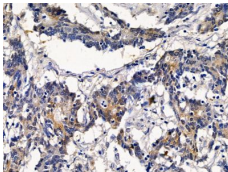
Uniprot: P17931

Description: galectin-3 galactose-specific lectin which binds IgE. Expressed at a high level in the colonic epithelium. Also abundant in activated macrophages.



Western Blot analysis of extracts from various samples, using Galectin 3 Mouse Monoclonal Ab.

Lane 1: Hela cells treated with blocking-peptides,
 Lane 2: Hela cells,
 Lane 3: Rat lung tissue,
 Lane 4: 3T3-L1P6 cells.



BF8044 at 1/100 staining human colorectal cancer by IHC-P. The sample was formaldehyde fixed and a heat mediated antigen retrieval step in citrate buffer was performed. The sample was then blocked and incubated with the primary Ab at 4°C overnight. An HRP conjugated anti-mouse Ab was used as the secondary Ab.

IMPORTANT: For western blot, incubate membrane with diluted primary Ab in 5% w/v milk , 1X TBS, 0.1% Tween@20 at 4°C with gentle shaking, overnight.



Affinity Biosciences
website: www.affbiotech.com
order: order@affbiotech.com

procedures. Not for resale without express authorization.