

ATPG Mouse Monoclonal Ab

[Images\(4\)](#)

Cat.#: BF8056 Concn.: ~1mg/ml Mol.Wt.: 33 KD
Size: 100ul Source: Mouse Clonality: Monoclonal

Application: IHC 1:50-1:200, IF/ICC 1:100-1:500, WB 1:1000-1:10000
*The optimal dilutions should be determined by the end user.

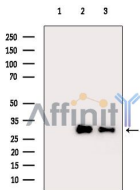
Reactivity: Human,Mouse,Rat

Storage: Mouse IgG1 in phosphate buffered saline (without Mg²⁺ and Ca²⁺), pH 7.4, 150mM NaCl, 0.02% sodium azide and 50% glycerol. Store at -20 °C. Stable for 12 months from date of receipt.

Purification: Affinity-chromatography.

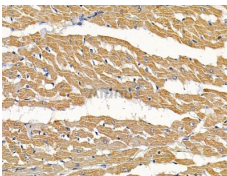
Immunogen: A synthesized peptide derived from human ATPG, corresponding to a region within the internal amino acids.

Uniprot: P36542

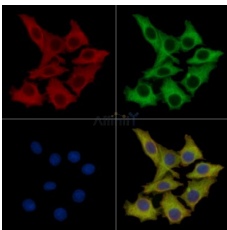


Western blot analysis of extracts from various samples, using ATPG Mouse Monoclonal Ab(1:10k, 10s exp).

Lane 1: rat heart tissue treated with blocking-peptides,
Lane 2: rat heart tissue,
Lane 3: mouse heart tissue.



BF8056 at 1/100 staining rat heart tissue by IHC-P. The sample was formaldehyde fixed and a heat mediated antigen retrieval step in citrate buffer was performed. The sample was then blocked and incubated with the primary Ab at 4°C overnight. An HRP conjugated anti-mouse Ab was used as the secondary Ab.



BF8056 staining HepG2 cells by IF/ICC. The samples were fixed with PFA and permeabilized in 0.1% Triton X-100, then blocked in 10% serum for 45 minutes at 25°C. Samples were then incubated with primary Ab(#BF8056) and rabbit anti-beta tubulin Ab(#AF7011) for 1 hour at 37°C. An AlexaFluor594 conjugated goat anti-mouse IgG Ab(Red) and an AlexaFluor488 conjugated goat anti-rabbit IgG Ab(Green) were used as the secondary Ab.

The nuclear counter stain is DAPI (blue).

IMPORTANT: For western blot, incubate membrane with diluted primary Ab in 5% w/v milk , 1X TBS, 0.1% Tween@20 at 4°C with gentle shaking, overnight.

For Research Use Only. Not for use in diagnostic and therapeutic procedures. Not for resale without express authorization.