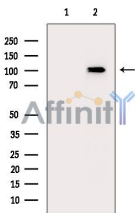


Factor B/CFB Mouse Monoclonal Ab

[Images\(1\)](#)

Cat.#: BF8079	Concn.: ~1mg/ml	Mol.Wt.: 86kD, 100kD
Size: 100ul	Source: Mouse	Clonality: Monoclonal

Application:	WB 1:1000-1:10000 *The optimal dilutions should be determined by the end user.
Reactivity:	Human,Mouse,Rat
Storage:	Mouse IgG1 in phosphate buffered saline (without Mg ²⁺ and Ca ²⁺), pH 7.4, 150mM NaCl, 0.02% sodium azide and 50% glycerol. Store at -20 °C. Stable for 12 months from date of receipt.
Purification:	Affinity-chromatography.
Immunogen:	A synthesized peptide derived from human Factor B/CFB, corresponding to a region within the internal amino acids.
Uniprot:	P00751
Description:	This gene encodes complement factor B, a component of the alternative pathway of complement activation. Factor B circulates in the blood as a single chain polypeptide. Upon activation of the alternative pathway, it is cleaved by complement factor D yielding the noncatalytic chain Ba and the catalytic subunit Bb. The active subunit Bb is a serine protease which associates with C3b to form the alternative pathway C3 convertase. Bb is involved in the proliferation of preactivated B lymphocytes, while Ba inhibits their proliferation. This gene localizes to the major histocompatibility complex (MHC) class III region on chromosome 6. This cluster includes several genes involved in regulation of the immune reaction.



Western blot analysis of extracts from A549 cells, using Factor B/CFB Mouse Monoclonal Ab. The lane on the left was treated with blocking-peptides.

IMPORTANT: For western blot, incubate membrane with diluted primary Ab in 5% w/v milk, 1X TBS, 0.1% Tween@20 at 4°C with gentle shaking, overnight.

For Research Use Only. Not for use in diagnostic and therapeutic procedures. Not for resale without express authorization.