

Zyxin Mouse Monoclonal Ab

[Images\(1\)](#)

Cat.#: BF8083	Concn.: ~1mg/ml	Mol.Wt.: 80kDa,70kDa
Size: 100ul	Source: Mouse	Clonality: Monoclonal

Application: WB 1:1000-1:5000
*The optimal dilutions should be determined by the end user.

Reactivity: Human,Mouse,Rat

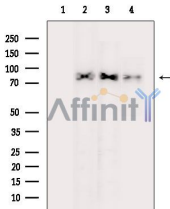
Storage: Mouse IgG1 in phosphate buffered saline (without Mg²⁺ and Ca²⁺), pH 7.4, 150mM NaCl, 0.02% sodium azide and 50% glycerol. Store at -20 °C. Stable for 12 months from date of receipt.

Purification: Affinity-chromatography.

Immunogen: A synthesized peptide derived from human Zyxin, corresponding to a region within the internal amino acids.

Uniprot: Q15942

Description: The zyxin family of proteins includes LIMD1, ajuba, trip6 and zyxin, each of which contains three LIM domains at the carboxy-terminus. Zyxin family members associate with the actin cytoskeleton and are components of both the cell-cell junction adhesive complex and the integrin-mediated adhesive complex. They shuttle in and out of the nucleus where they may function in transcriptional activation .Zyxin is involved in the regulation of mechanical force-induced actin polymerization at focal adhesions , and in regulation of adhesion and migration, possibly through recruitment of Ena/VASP proteins to focal adhesions . Zyxin interacts with and may regulate the function of the tumor suppressor myopodin, which inhibits tumor growth and metastasis .



Western blot analysis of extracts from various samples, using Zyxin Mouse Monoclonal Ab.

Lane 1: MC-3T3-E1 cells treated with blocking-peptides,

Lane 2: MC-3T3-E1 cells,

Lane 3: RAW264.7 cells,

Lane 4: rat brain tissue.

IMPORTANT: For western blot, incubate membrane with diluted primary Ab in 5% w/v milk , 1X TBS, 0.1% Tween@20 at 4°C with gentle shaking, overnight.

For Research Use Only. Not for use in diagnostic and therapeutic procedures. Not for resale without express authorization.