

## ADD1 Mouse Monoclonal Ab

[Images\(2\)](#)

Cat.#: BF8113	Concn.: ~1mg/ml	Mol.Wt.: 80kDa
Size: 100ul	Source: Mouse	Clonality: Monoclonal

**Application:** WB 1:1000-1:5000  
 \*The optimal dilutions should be determined by the end user.

**Reactivity:** Human,Mouse,Rat,Monkey

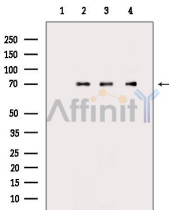
**Storage:** Mouse IgG1 in phosphate buffered saline (without Mg<sup>2+</sup> and Ca<sup>2+</sup>), pH 7.4, 150mM NaCl, 0.02% sodium azide and 50% glycerol. Store at -20 °C. Stable for 12 months from date of receipt.

**Purification:** Affinity-chromatography.

**Immunogen:** A synthesized peptide derived from human ADD1, corresponding to a region within C-terminal amino acids.

**Uniprot:** P35611/P35612

**Description:** ADD2 a cytoskeletal protein that promotes the assembly of the spectrin-actin network. Adducin is a heterodimeric protein that consists of related subunits. Alpha- and beta-adducin include a protease-resistant N-terminal region and a protease-sensitive, hydrophilic C-terminal region.



Western blot analysis of extracts from various samples, using ADD1 Mouse Monoclonal Ab.

Lane 1: Raw264.7 cells (uv treatment), blocked with antigen-specific peptides.

Lane 2: Raw264.7 cells (uv treatment).

Lane 3: Hela cells (heat-shock treatment).

Lane 4: 293 cells (serum starvation treatment).

**IMPORTANT:** For western blot, incubate membrane with diluted primary Ab in 5% w/v milk, 1X TBS, 0.1% Tween@20 at 4°C with gentle shaking, overnight.

For Research Use Only. Not for use in diagnostic and therapeutic procedures. Not for resale without express authorization.