

Hsp90 beta Mouse Monoclonal Ab

[Images\(6\)](#)

Cat.#: BF8119 Concn.: ~1mg/ml Mol.Wt.: 96/83kDa
Size: 100ul Source: Mouse Clonality: Monoclonal

Application: WB 1:1000-1:5000
 *The optimal dilutions should be determined by the end user.

Reactivity: Human,Mouse,Rat,Monkey

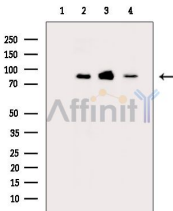
Storage: Mouse IgG1 in phosphate buffered saline (without Mg²⁺ and Ca²⁺), pH 7.4, 150mM NaCl, 0.02% sodium azide and 50% glycerol. Store at -20 °C. Stable for 12 months from date of receipt.

Purification: Affinity-chromatography.

Immunogen: A synthesized peptide derived from human Hsp90 beta, corresponding to a region within the internal amino acids.

Uniprot: P08238

Description: Molecular chaperone. Has ATPase activity.



Western blot analysis of extracts from various samples, using Hsp90 beta Mouse Monoclonal Ab.
Lane 1: Mouse testis, blocked with antigen-specific peptides.
Lane 2: Mouse testis.
Lane 3: Mouse brain.
Lane 4: Mouse lung.

IMPORTANT: For western blot, incubate membrane with diluted primary Ab in 5% w/v milk, 1X TBS, 0.1% Tween@20 at 4°C with gentle shaking, overnight.

For Research Use Only. Not for use in diagnostic and therapeutic procedures. Not for resale without express authorization.