

p53 Mouse Monoclonal Ab

[Images\(2\)](#)

Cat.#: BF8127	Concn.: ~1mg/ml	Mol.Wt.: 53kDa
Size: 100ul	Source: Mouse	Clonality: Monoclonal

Application: WB 1:1000-1:5000
 *The optimal dilutions should be determined by the end user.

Reactivity: Human,Mouse,Rat,Monkey

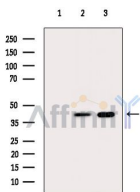
Storage: Mouse IgG1 in phosphate buffered saline (without Mg²⁺ and Ca²⁺), pH 7.4, 150mM NaCl, 0.02% sodium azide and 50% glycerol. Store at -20 °C. Stable for 12 months from date of receipt.

Purification: Affinity-chromatography.

Immunogen: A synthesized peptide derived from human p53, corresponding to a region within N-terminal amino acids.

Uniprot: P04637

Description: Tumor protein p53, a nuclear protein, plays an essential role in the regulation of cell cycle, specifically in the transition from G0 to G1. It is found in very low levels in normal cells, however, in a variety of transformed cell lines, it is expressed in high amounts, and believed to contribute to transformation and malignancy.



Western blot analysis of extracts from various samples, using p53 Mouse Monoclonal Ab.

Lane 1: Rat kidney, blocked with antigen-specific peptides.

Lane 2: Rat kidney.

Lane 3: Mouse testis.

IMPORTANT: For western blot, incubate membrane with diluted primary Ab in 5% w/v milk , 1X TBS, 0.1% Tween@20 at 4°C with gentle shaking, overnight.

For Research Use Only. Not for use in diagnostic and therapeutic procedures. Not for resale without express authorization.