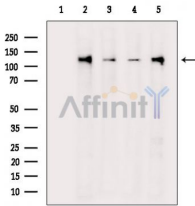


eNOS Mouse Monoclonal Ab

[Images\(3\)](#)

Cat.#: BF8157	Concn.: ~1mg/ml	Mol.Wt.: 140kDa
Size: 100ul	Source: Mouse	Clonality: Monoclonal

Application:	WB 1:1000-1:5000 *The optimal dilutions should be determined by the end user.
Reactivity:	Human,Mouse,Rat
Storage:	Mouse IgG1 in phosphate buffered saline (without Mg ²⁺ and Ca ²⁺), pH 7.4, 150mM NaCl, 0.02% sodium azide and 50% glycerol. Store at -20 °C. Stable for 12 months from date of receipt.
Purification:	Affinity-chromatography.
Immunogen:	A synthesized peptide derived from human eNOS, corresponding to a region within the internal amino acids.
Uniprot:	P29474
Description:	eNOS is an endothelial constitutive nitric oxide synthase. Synthesizes nitric oxide (NO) from arginine and oxygen, which is implicated in vascular smooth muscle relaxation through a cGMP-mediated signal transduction pathway.



Western blot analysis of extracts from various samples, using eNOS Mouse Monoclonal Ab.

- Lane 1: Rat lung, blocked with antigen-specific peptides.
- Lane 2: Rat lung.
- Lane 3: Rat liver.
- Lane 4: Mouse liver.
- Lane 5: Mouse lung.

IMPORTANT: For western blot, incubate membrane with diluted primary Ab in 5% w/v milk , 1X TBS, 0.1% Tween@20 at 4°C with gentle shaking, overnight.

For Research Use Only. Not for use in diagnostic and therapeutic procedures. Not for resale without express authorization.