

Ki67 Mouse Monoclonal Ab

[Images\(1\)](#)

Cat.#: BF8197 Concn.: ~1mg/ml Mol.Wt.: 358kDa
Size: 100ul Source: Mouse Clonality: Monoclonal

Application: WB 1:1000-1:5000
*The optimal dilutions should be determined by the end user.

Reactivity: Human,Mouse

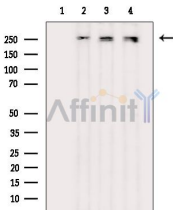
Storage: Mouse IgG1 in phosphate buffered saline (without Mg²⁺ and Ca²⁺), pH 7.4, 150mM NaCl, 0.02% sodium azide and 50% glycerol. Store at -20 °C. Stable for 12 months from date of receipt.

Purification: Affinity-chromatography.

Immunogen: A synthesized peptide derived from human Ki67, corresponding to a region within C-terminal amino acids.

Uniprot: P46013

Description: Interacts with KIF15. Binds through the FHA domain to NIFK. Part of a complex composed at least of ASCL2, C11orf30/EMSY, HCFC1, HSPA8, CCAR2, MATR3, MKI67, RBBP5, TUBB2A, WDR5 and ZNF335; this complex may have a histone H3-specific methyltransferase activity



Western blot analysis of extracts from various samples, using Ki67 Mouse Monoclonal Ab.

Lane 1: B16f10-luc cells, blocked with antigen-specific peptides.
Lane 2: B16f10-luc cells.
Lane 3: Colo205 cells.
Lane 4: Mouse muscle.

IMPORTANT: For western blot, incubate membrane with diluted primary Ab in 5% w/v milk , 1X TBS, 0.1% Tween@20 at 4°C with gentle shaking, overnight.

For Research Use Only. Not for use in diagnostic and therapeutic procedures. Not for resale without express authorization.