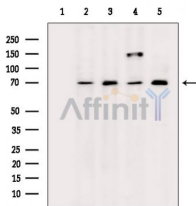


PKC beta 1 Mouse Monoclonal Ab

[Images\(3\)](#)

Cat.#: BF8215	Concn.: ~1mg/ml	Mol.Wt.: 77kDa
Size: 100ul	Source: Mouse	Clonality: Monoclonal

Application:	WB 1:1000-1:5000 *The optimal dilutions should be determined by the end user.
Reactivity:	Human,Mouse,Rat
Storage:	Mouse IgG1 in phosphate buffered saline (without Mg ²⁺ and Ca ²⁺), pH 7.4, 150mM NaCl, 0.02% sodium azide and 50% glycerol. Store at -20 °C. Stable for 12 months from date of receipt.
Purification:	Affinity-chromatography.
Immunogen:	A synthesized peptide derived from human PKC beta 1, corresponding to a region within C-terminal amino acids.
Uniprot:	P05771
Description:	Pim1 is thought to play a role in signal transduction in blood cells. May affect the structure or silencing of chromatin by phosphorylating HP1 gamma/CBX3.



Western blot analysis of extracts from various samples, using PKC beta 1 Mouse Monoclonal Ab.

Lane 1: Mouse lung, blocked with antigen-specific peptides.

Lane 2: Mouse lung.

Lane 3: Rat lung.

Lane 4: Rat brain.

Lane 5: Rat testis.

IMPORTANT: For western blot, incubate membrane with diluted primary Ab in 5% w/v milk, 1X TBS, 0.1% Tween@20 at 4°C with gentle shaking, overnight.

For Research Use Only. Not for use in diagnostic and therapeutic procedures. Not for resale without express authorization.