

ErbB-2/HER2 Mouse mAb

Cat.#: BF9201
Size: 50ul,100ul,200ul

Concn.: 1mg/ml
Source: Mouse

Mol.Wt.: 138
Clonality: Monoclonal

Application: WB 1:1000 IHC 1:50-1:200

Reactivity: Human,Mouse,Rat

Purification: affinity purification.

Specificity: The ErbB-2/HER-2 mouse monoclonal Ab can detect endogenous ErbB-2/HER-2 proteins.

Immunogen: Mouse monoclonal antibody is prepared by immunizing synthetic peptide coupled to KLH.

Uniprot: P04626

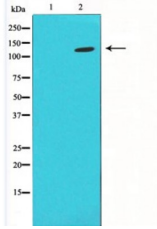
Description: ErbB 2 is a receptor tyrosine kinase of the ErbB 2 family. It is closely related in structure to the epidermal growth factor receptor. ErbB 2 oncoprotein is detectable in a proportion of breast and other adenocarcinomas, as well as transitional cell carcinomas. In the case of breast cancer, expression determined by immunohistochemistry has been shown to be associated with poor prognosis.

Subcellular Location: Cytoplasm. Nucleus and Cell membrane. Cytoplasm, perinuclear region. Nucleus. Translocation to the nucleus requires endocytosis, probably endosomal sorting and is mediated by importin beta-1/KPNB1.

Tissue Specificity: Expressed in a variety of tumor tissues including primary breast tumors and tumors from small bowel, esophagus, kidney and mouth.

Similarity: Belongs to the protein kinase superfamily. Tyr protein kinase family. EGF receptor subfamily.

Storage Condition and Buffer: Mouse IgG in phosphate buffered saline (without Mg²⁺ and Ca²⁺), pH 7.4, 150mM NaCl, 0.02% sodium azide and 50% glycerol.Store at -20 °C.Stable for 12 months from date of receipt.



Western blot analysis of 1) Hela, 2) Mouse Brain with ErbB-2/HER-2 mAb diluted at 1:4,000.

IMPORTANT: For western blot, incubate membrane with diluted primary Ab in 5% w/v milk, 1X TBS, 0.1% Tween@20 at 4°C with gentle shaking, overnight.

For Research Use Only. Not for use in diagnostic and therapeutic procedures. Not for resale without express authorization.