

Phospho-E-Catenin (Ser655/Thr658) Ab

Cat.#: DF2984
Size: 100ul,200ul

Concn.: 1mg/ml
Source: Rabbit

Mol.Wt.: 100KD
Clonality: Polyclonal

Application: WB 1:1000-3000

Reactivity: Human,Mouse

Purification: The Ab is from purified rabbit serum by affinity purification via sequential chromatography on phospho- and non-phospho-peptide affinity columns.

Specificity: Phospho-E-Catenin (Ser655/Thr658) Ab detects endogenous levels of E-Catenin only when phosphorylated at Ser655/Thr658

Immunogen: A synthesized peptide derived from human Phospho-E-Catenin (Ser655/Thr658)

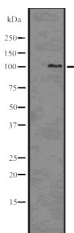
Uniprot: P35221

Subcellular Location: Cell membrane and Cytoplasm > cytoskeleton. Cell junction > adherens junction. Cell membrane. Cell junction. Found at cell-cell boundaries and probably at cell-matrix boundaries.

Tissue Specificity: Expressed ubiquitously in normal tissues.

Similarity: Belongs to the vinculin/alpha-catenin family.

Storage Condition and Buffer: Rabbit IgG in phosphate buffered saline , pH 7.4, 150mM NaCl, 0.02% sodium azide and 50% glycerol.Store at -20 °C.Stable for 12 months from date of receipt



Western blot analysis Phospho-E-Catenin (Ser655/Thr658) using HUVEC whole cell lysates

IMPORTANT: For western blot, incubate membrane with diluted Ab in 5% w/v milk , 1X TBS, 0.1% Tween@20 at 4°C with gentle shaking, overnight.

For Research Use Only. Not for use in diagnostic and therapeutic procedures. Not for resale without express authorization.