

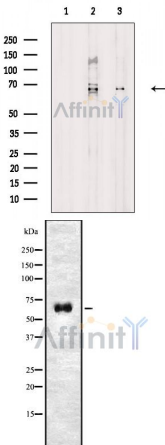
APC8 Antibody

Cat.#: DF8637
Size: 100ul,200ul

Concn.: 1mg/ml
Source: Rabbit

Mol.Wt.: 68 kDa
Clonality: Polyclonal

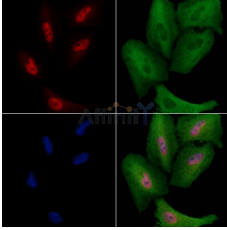
- Application:** WB 1:1000-3000, IF/ICC 1:100-1:500, ELISA(peptide) 1:20000-1:40000
*The optimal dilutions should be determined by the end user.
- Reactivity:** Human,Mouse
- Purification:** The antiserum was purified by peptide affinity chromatography using SulfoLink™ Coupling Resin (Thermo Fisher Scientific).
- Specificity:** APC8 Antibody detects endogenous levels of total APC8.
- Immunogen:** A synthesized peptide derived from human APC8, corresponding to a region within the internal amino acids.
- Uniprot:** Q9UJX2
- Storage Condition and Buffer:** Rabbit IgG in phosphate buffered saline , pH 7.4, 150mM NaCl, 0.02% sodium azide and 50% glycerol.Store at -20 °C.Stable for 12 months from date of receipt.



Western blot analysis of extracts from various samples, using APC8 Antibody.

- Lane 1: HepG2 cells(serum starvation treatment), blocked with antigen-specific peptides,
- Lane 2: HepG2 cells(serum starvation treatment),
- Lane 3: RAW264.7 cells(serum starvation treatment).

Western blot analysis of APC8 using HuvEc whole cell lysates



DF8637 staining A549 cells by IF/ICC. The samples were fixed with PFA and permeabilized in 0.1% Triton X-100, then blocked in 10% serum for 45 minutes at 25°C. Samples were then incubated with primary Ab(DF8637) and mouse anti-beta tubulin Ab(T0023) for 1 hour at 37°C. An AlexaFluor594 conjugated goat anti-rabbit IgG(H+L) Ab(Red) and an AlexaFluor488 conjugated goat anti-mouse IgG(H+L) Ab(Green) were used as the secondary antibody.

IMPORTANT: For western blot, incubate membrane with diluted primary Ab in 5% w/v milk, 1X TBS, 0.1% Tween@20 at 4°C with gentle shaking, overnight.

For Research Use Only. Not for use in diagnostic and therapeutic procedures. Not for resale without express authorization.