

Cofilin Antibody

Cat.#: DF8647	Concn.: 1mg/ml	Mol.Wt.: 18 kDa
Size: 100ul,200ul	Source: Rabbit	Clonality: Polyclonal

Application: WB 1:1000-3000, ELISA(peptide) 1:20000-1:40000
 *The optimal dilutions should be determined by the end user.

Reactivity: Human,Mouse,Rat

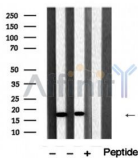
Purification: The antiserum was purified by peptide affinity chromatography using SulfoLink™ Coupling Resin (Thermo Fisher Scientific).

Specificity: Cofilin Antibody detects endogenous levels of total Cofilin.

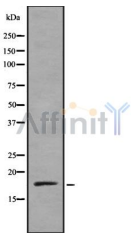
Immunogen: A synthesized peptide derived from human Cofilin, corresponding to a region within the internal amino acids.

Uniprot: P23528/Q9Y281

Storage Condition and Buffer: Rabbit IgG in phosphate buffered saline , pH 7.4, 150mM NaCl, 0.02% sodium azide and 50% glycerol.Store at -20 °C.Stable for 12 months from date of receipt.



Western blot analysis of extracts from various samples, using Cofilin Antibody.
 Lane 1: Mouse brain lysates;
 Lane 2: Rat brain lysates;
 Lane 3: Rat brain lysates treated with blocking peptide;



Western blot analysis of Cofilin using A549 whole cell lysates

IMPORTANT: For western blot, incubate membrane with diluted primary Ab in 5% w/v milk , 1X TBS, 0.1% Tween@20 at 4°C with gentle shaking, overnight.

For Research Use Only. Not for use in diagnostic and therapeutic procedures. Not for resale without express authorization.